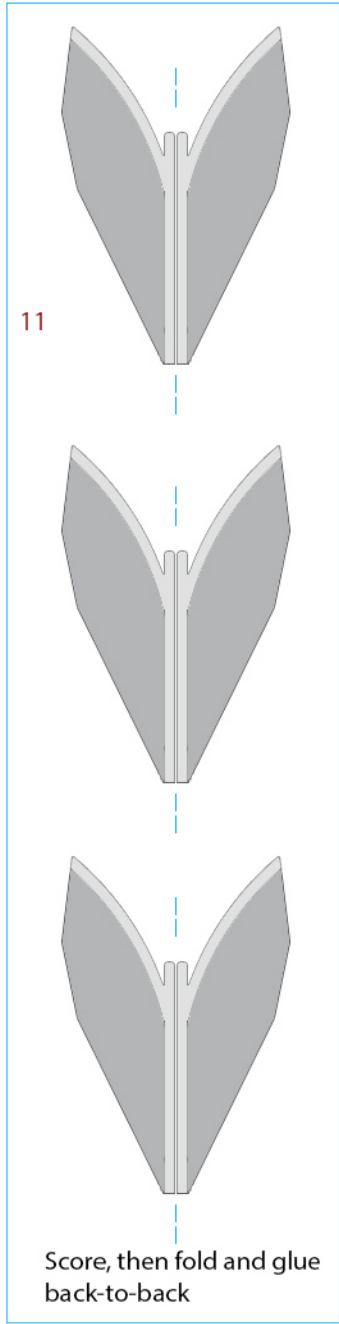
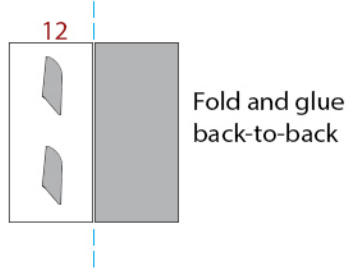
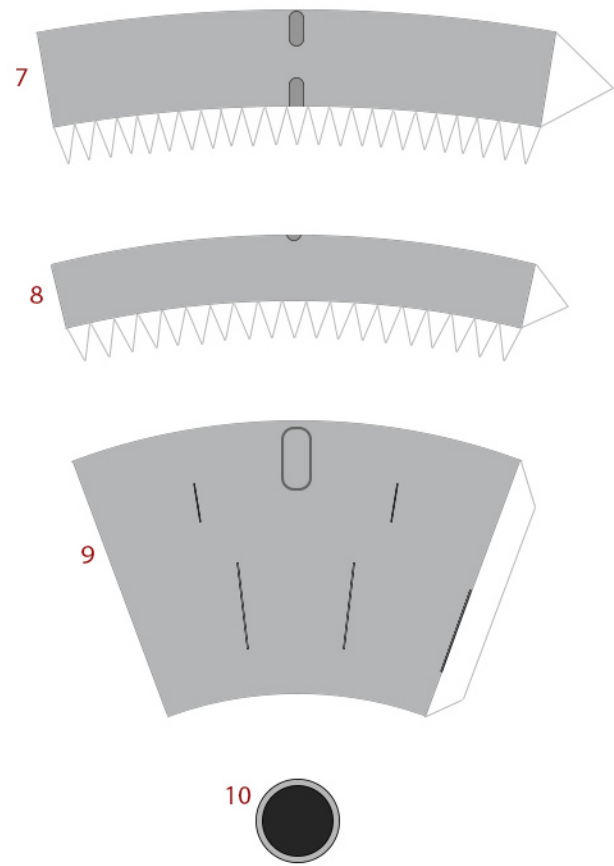
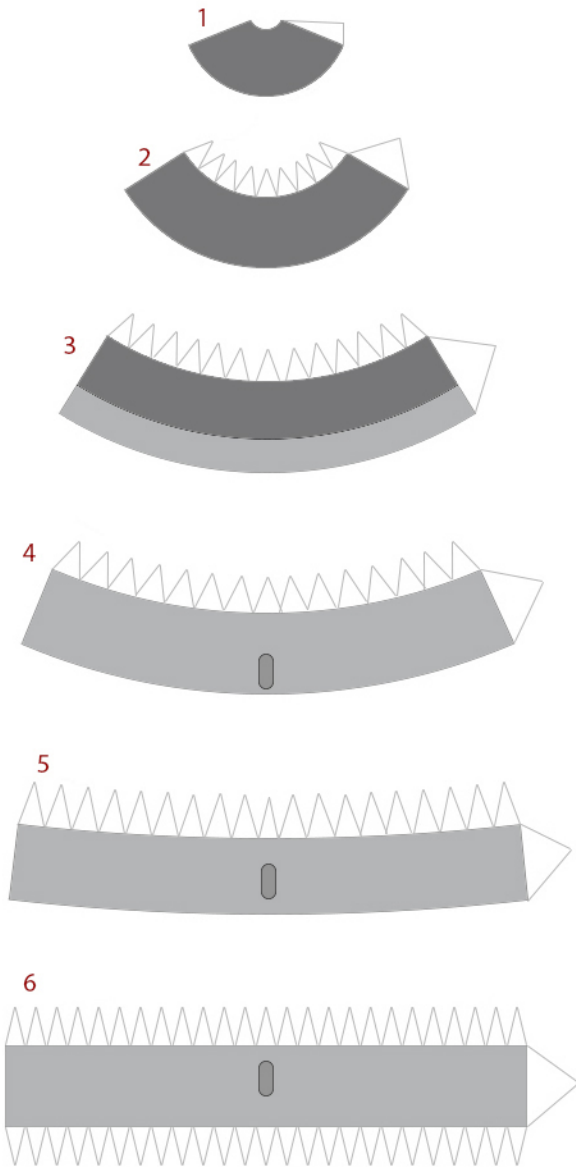
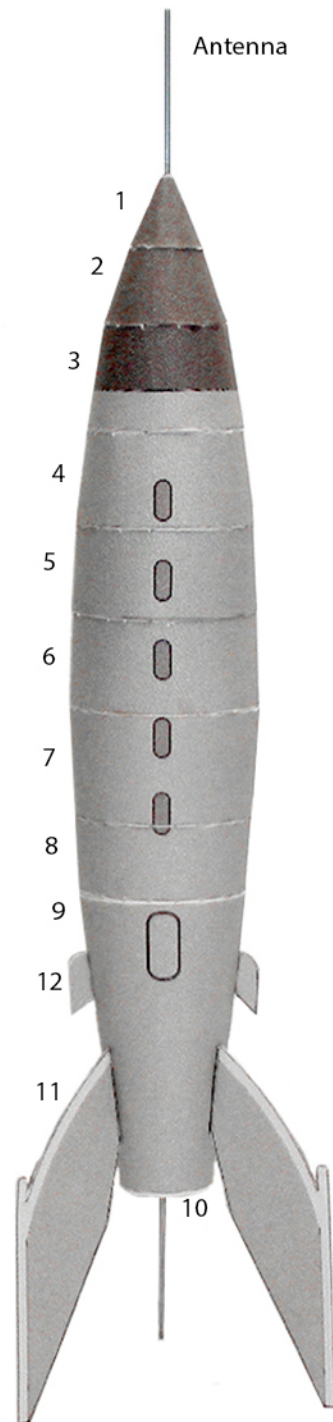


Retro Rocket Ship 61

Cut a plastic broom straw or similar material the same length as the line above for the antenna



Retro Rocket Ship 61



Keep all graphics together

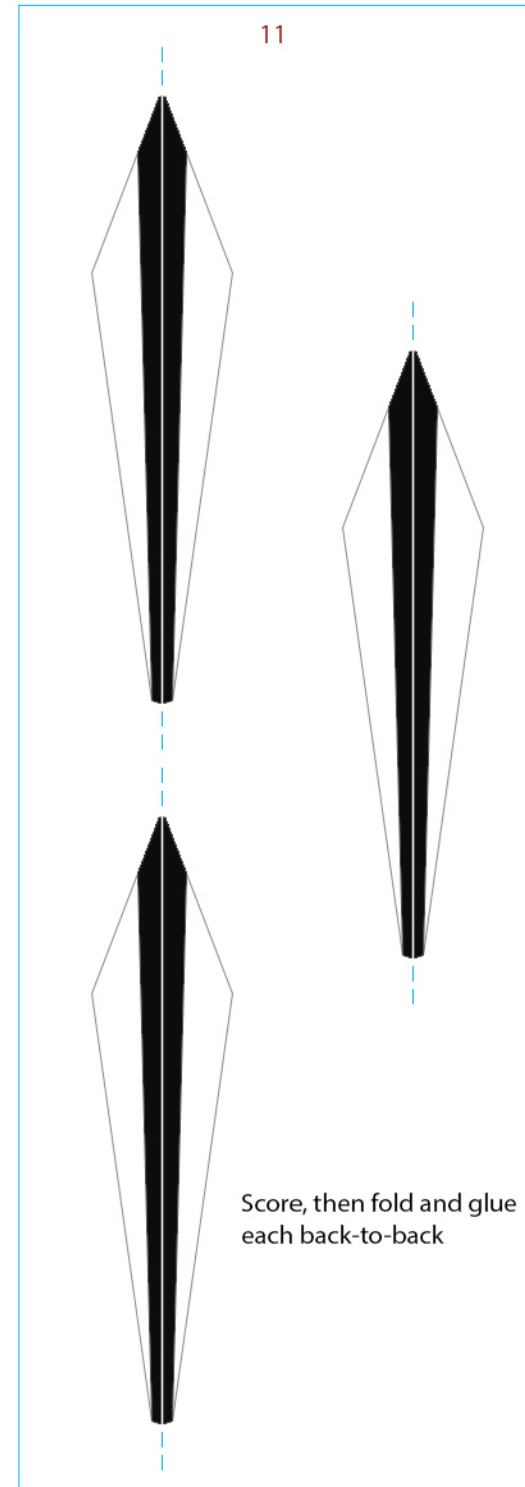
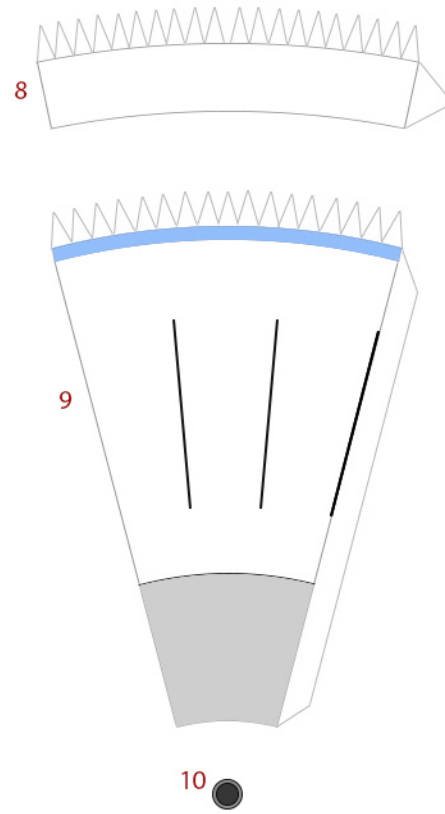
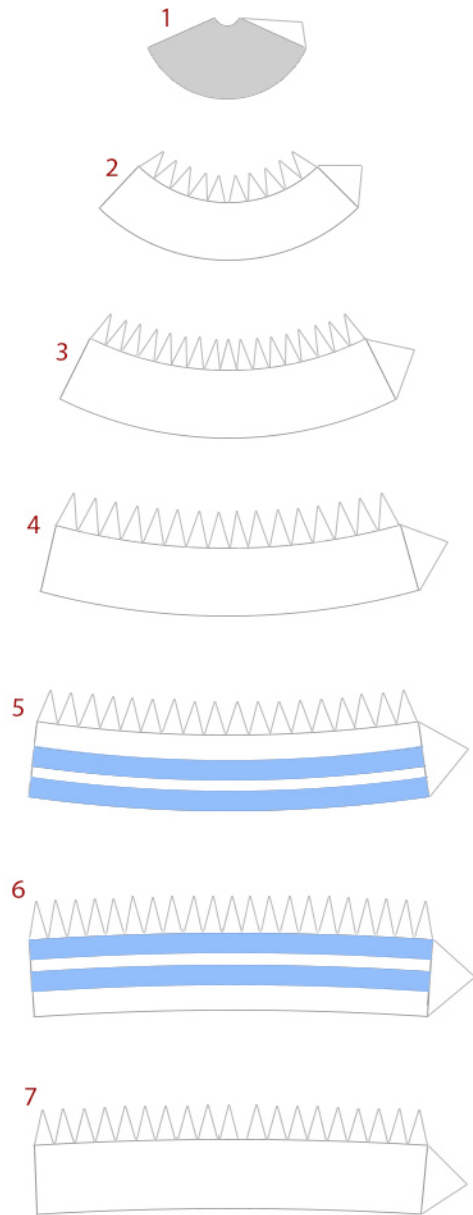
Glue 10 to the bottom of 9

Glue 11 to the three (3) long lines on 9

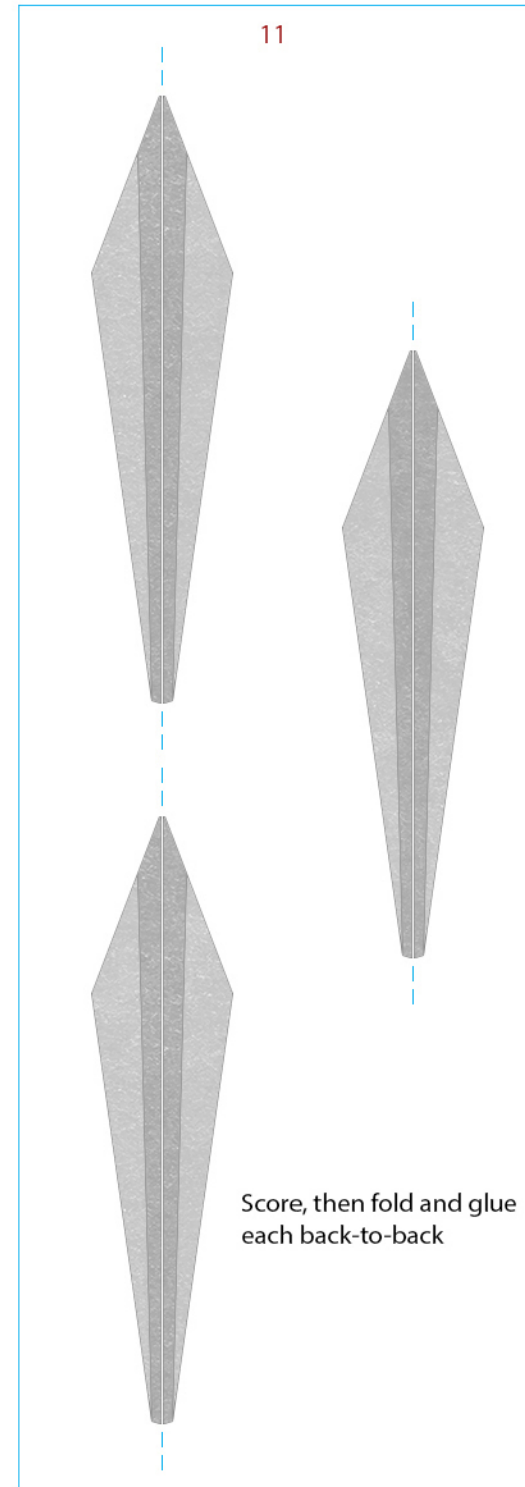
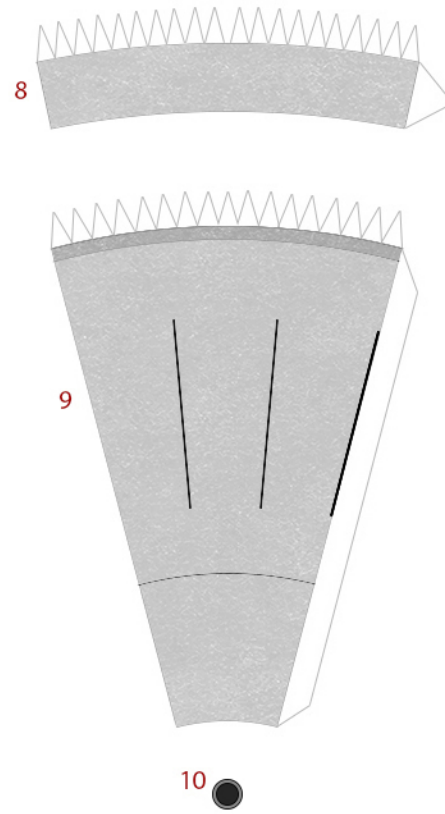
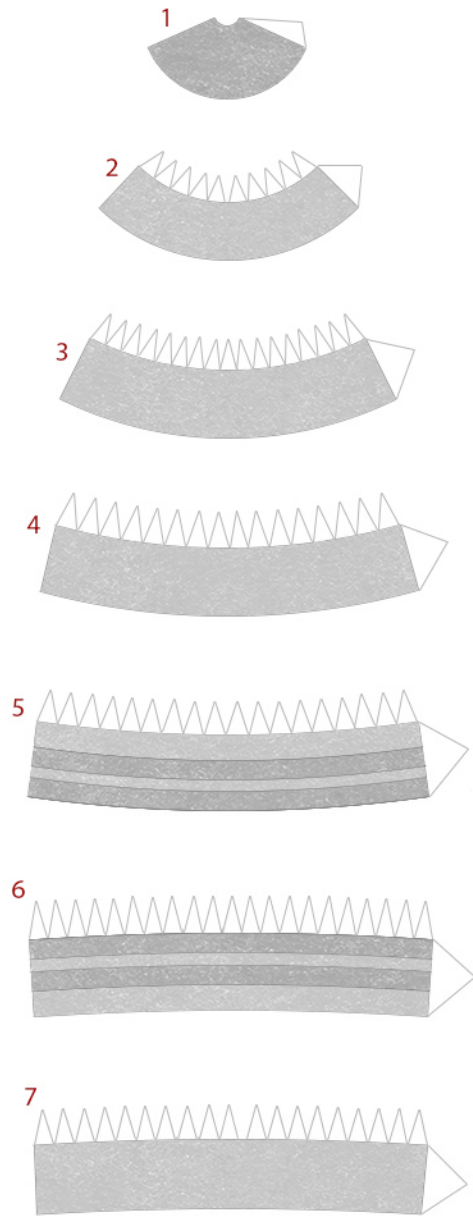
Glue 12 to the two (2) short lines on 9



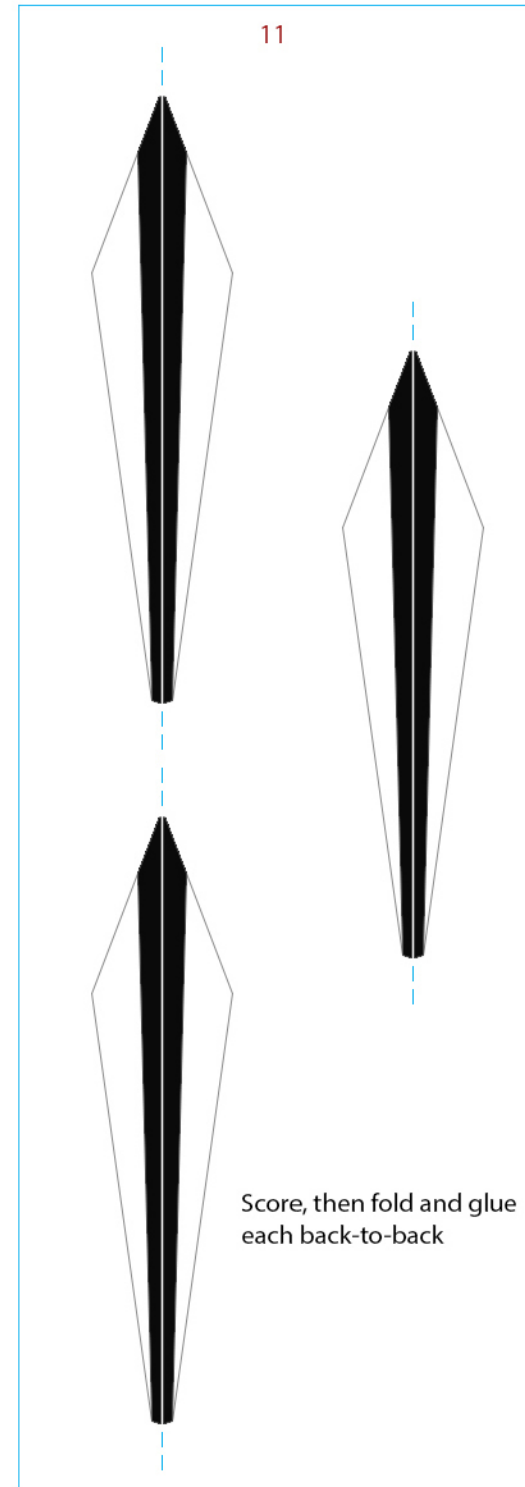
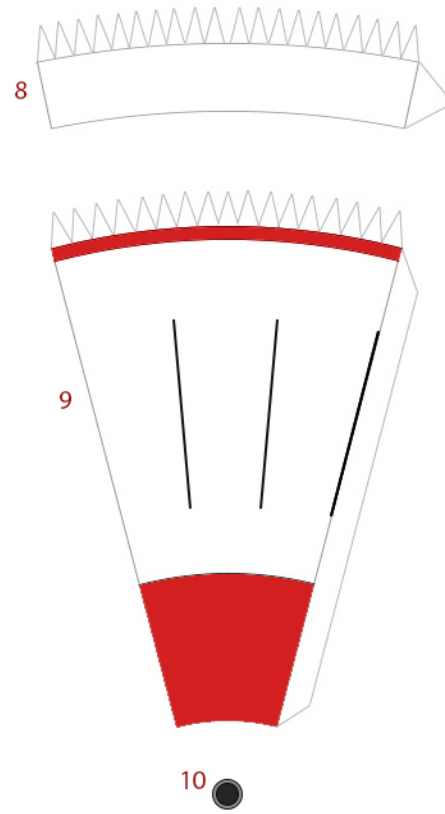
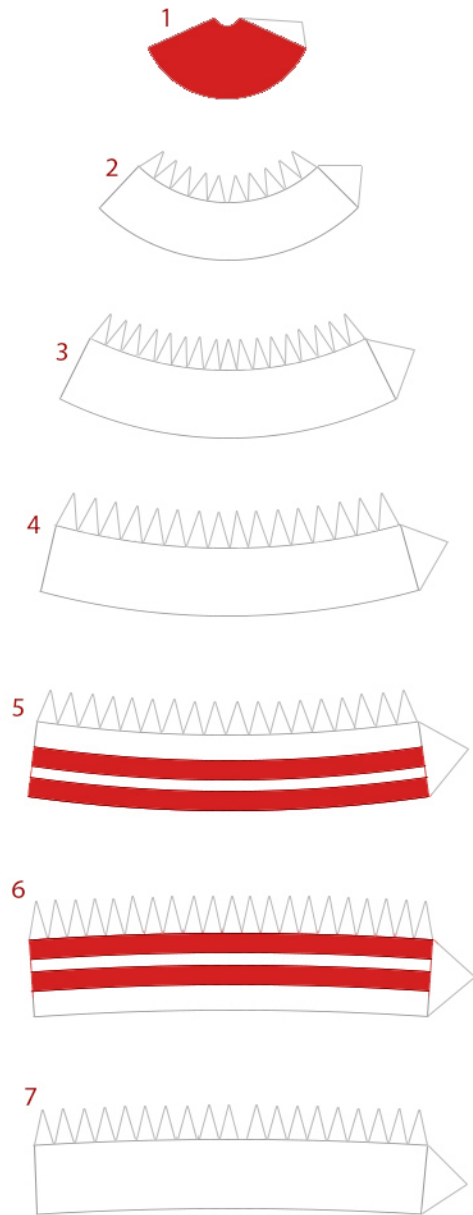
Retro Rocket Ship 62



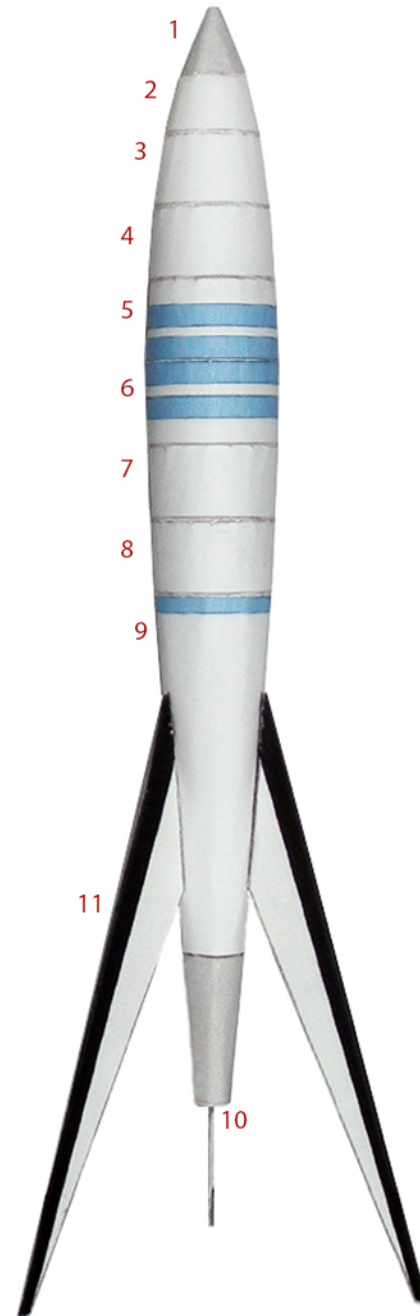
Retro Rocket Ship 62



Retro Rocket Ship 62



Instructions

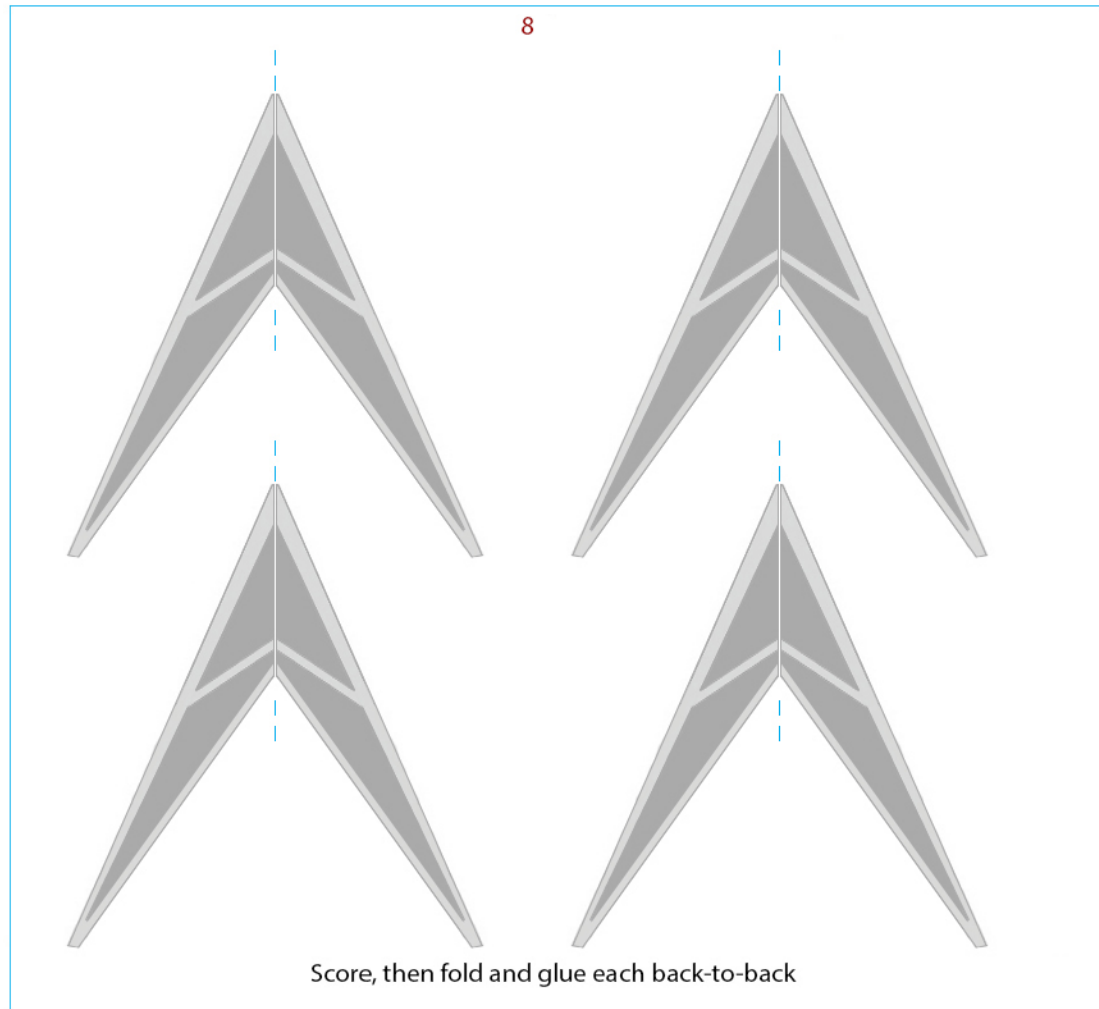
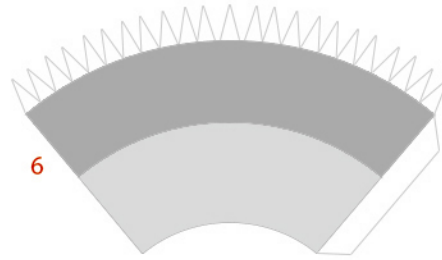
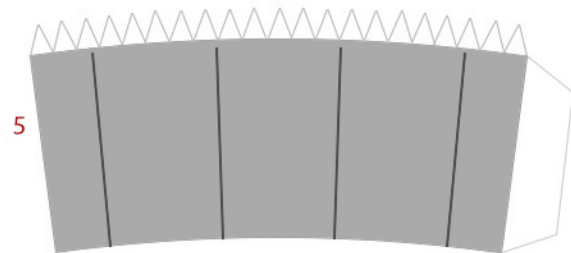
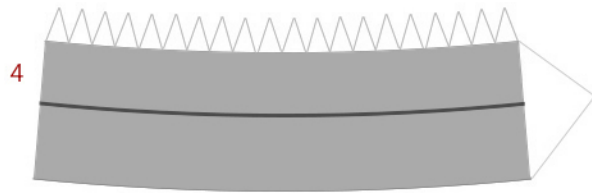
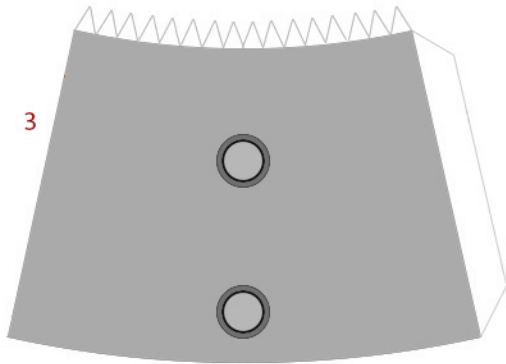
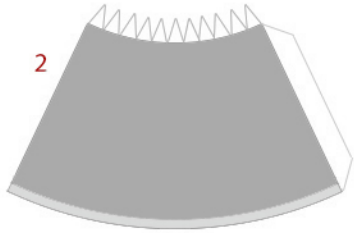
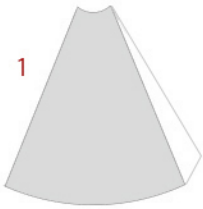


Keep all seems together

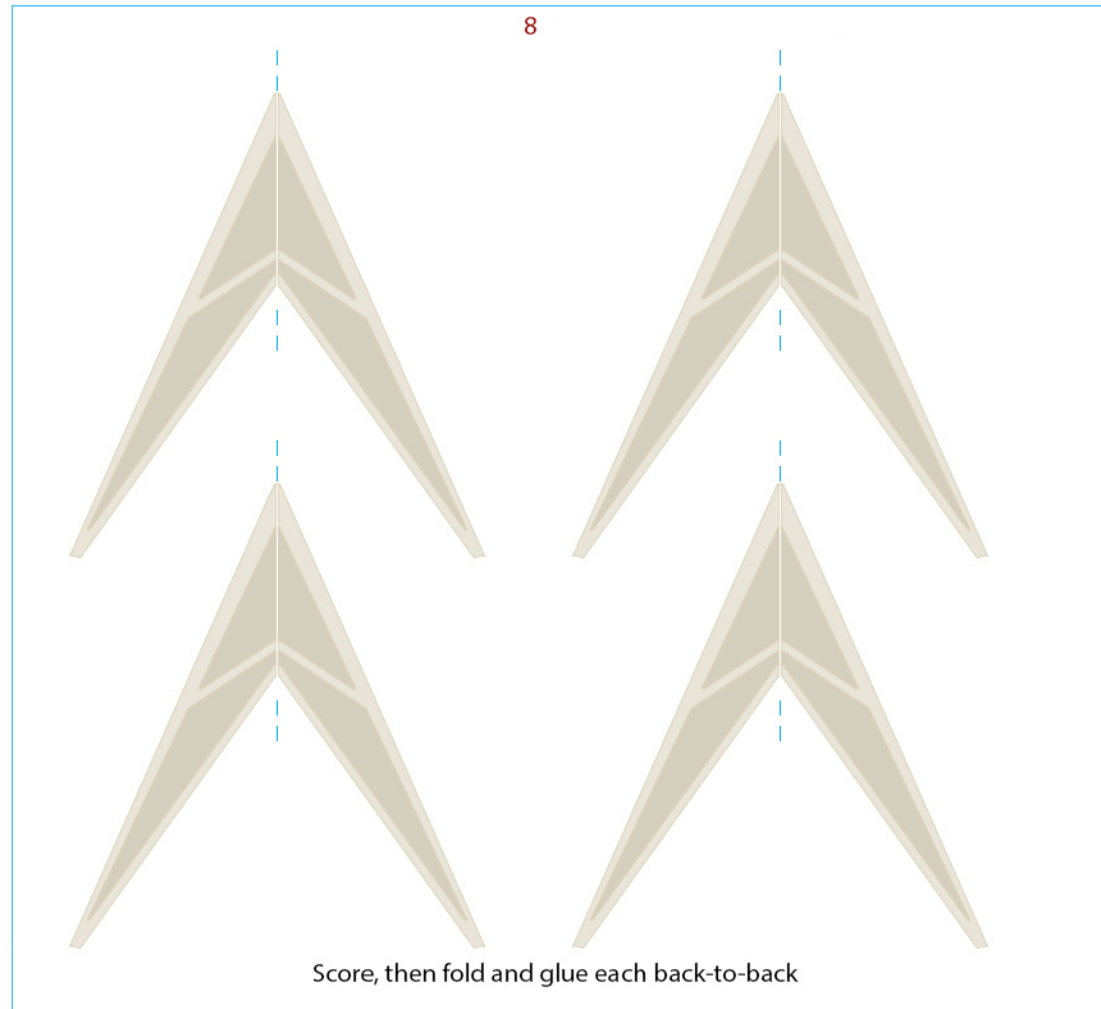
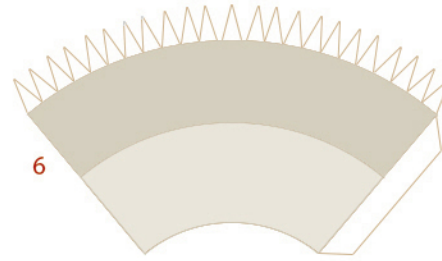
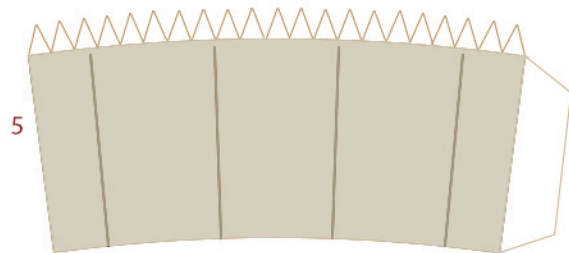
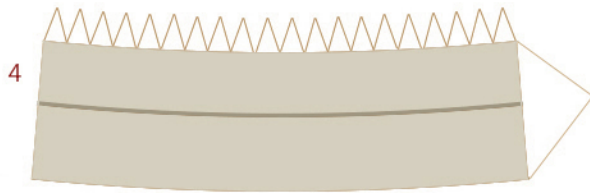
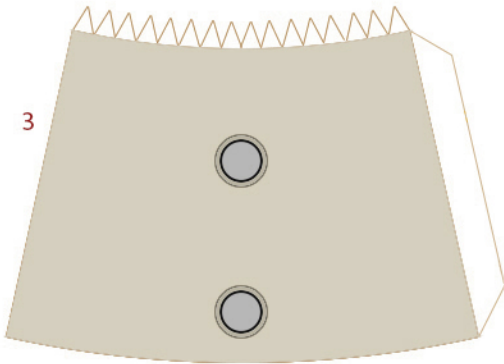
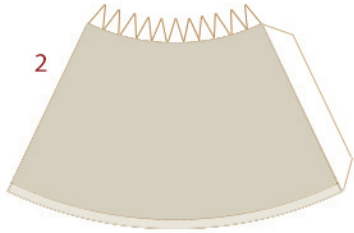
Glue 10 to the bottom of 9

Glue 11 to the three (3) black lines on 9

Retro Rocket Ship 63

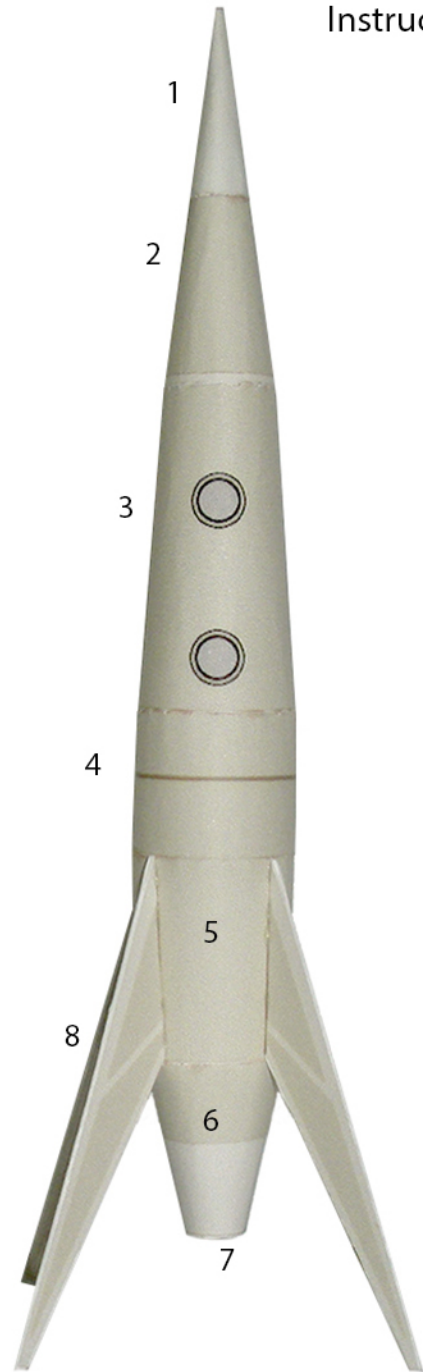


Retro Rocket Ship 63



Retro Rocket Ship 63

Instructions



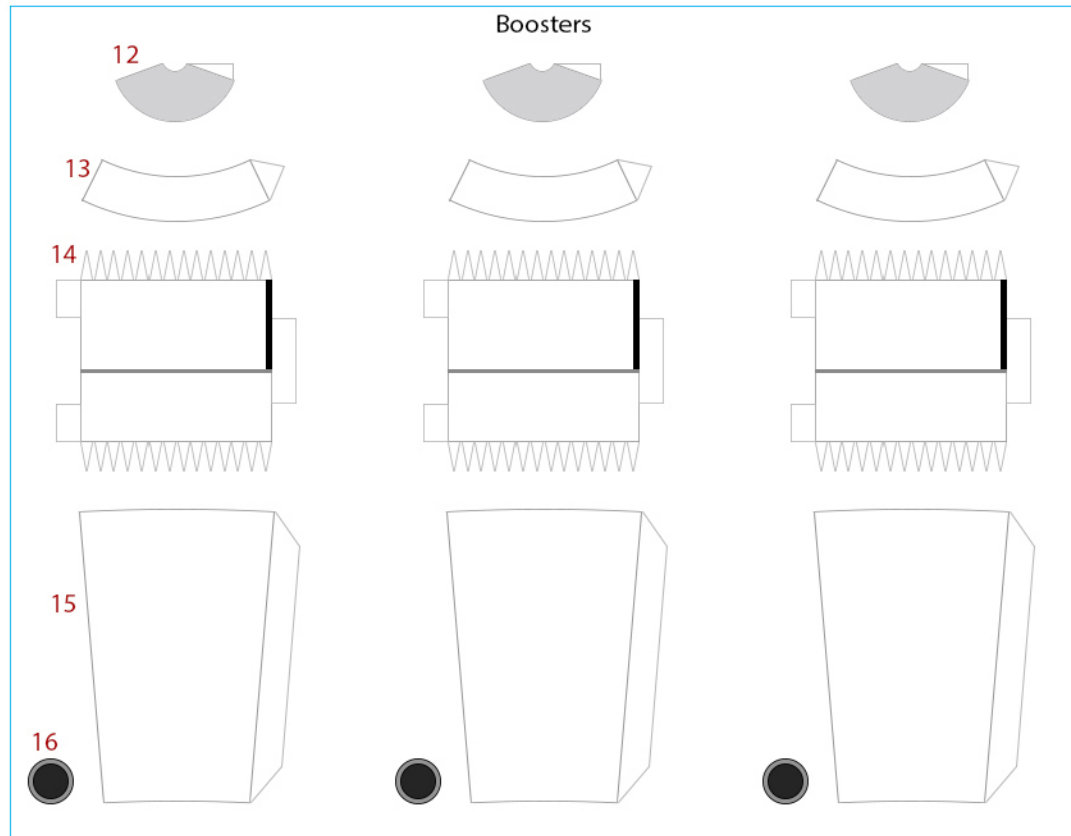
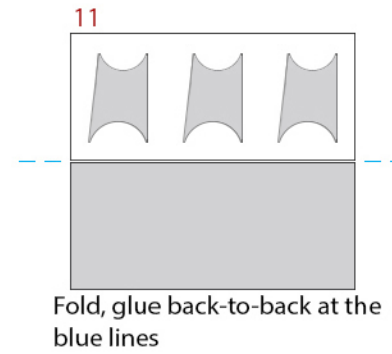
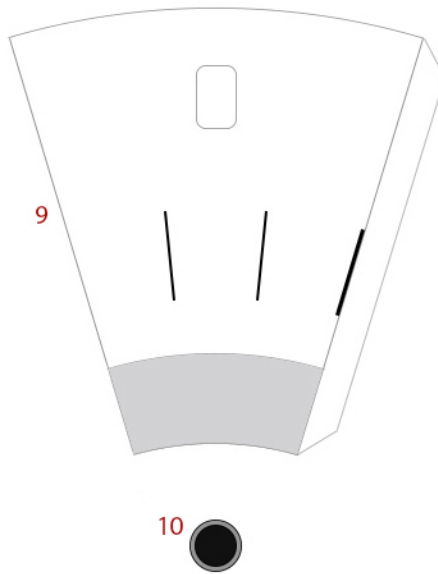
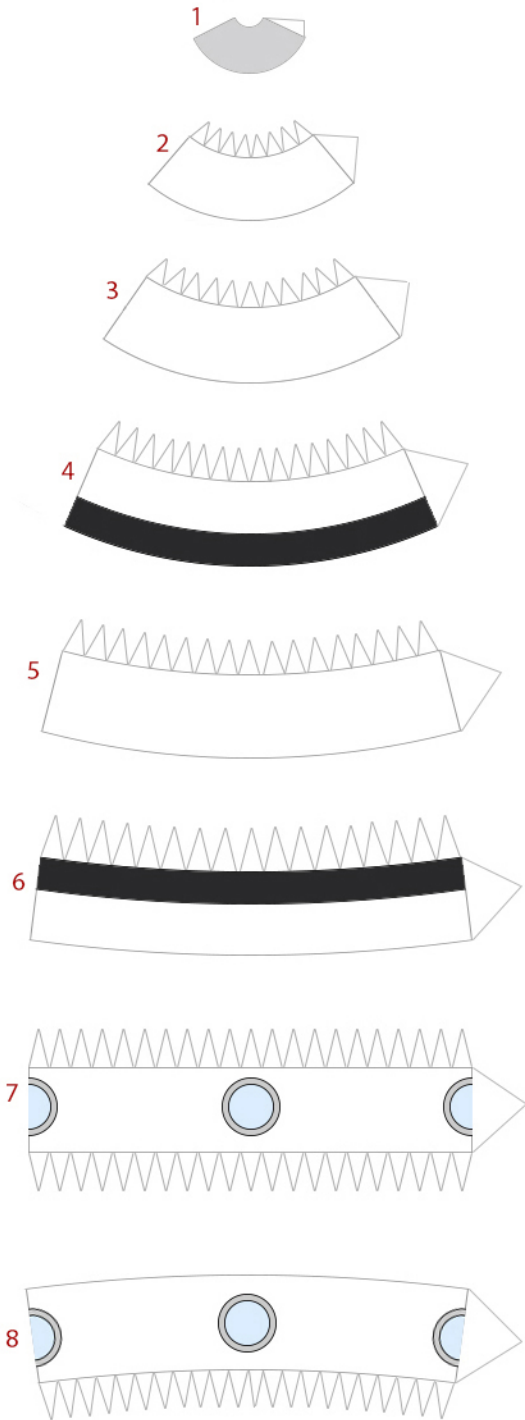
Keep all seems together

GLue 7 to the bottom of 6

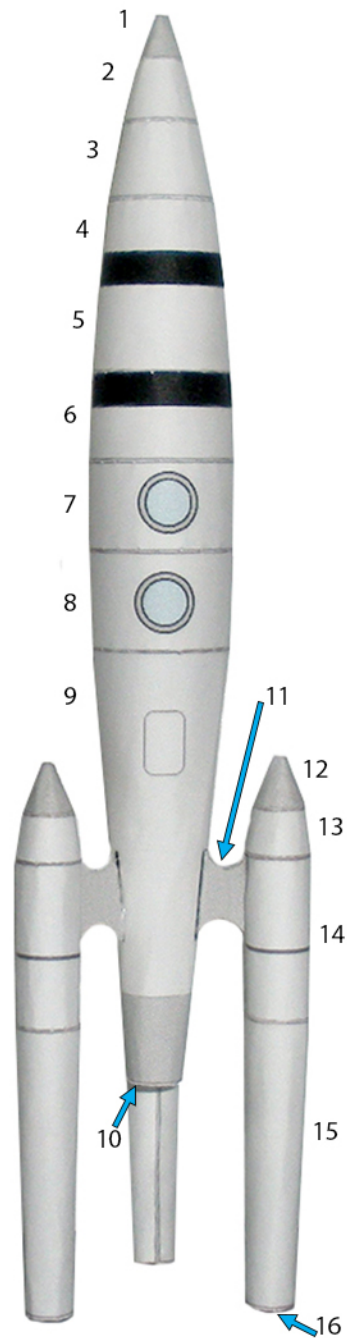
Glue 8 onto the four (4) lines on 5



Retro Rocket Ship 64



Instructions



Keep all seems together

Glue 10 to the bottom of 9

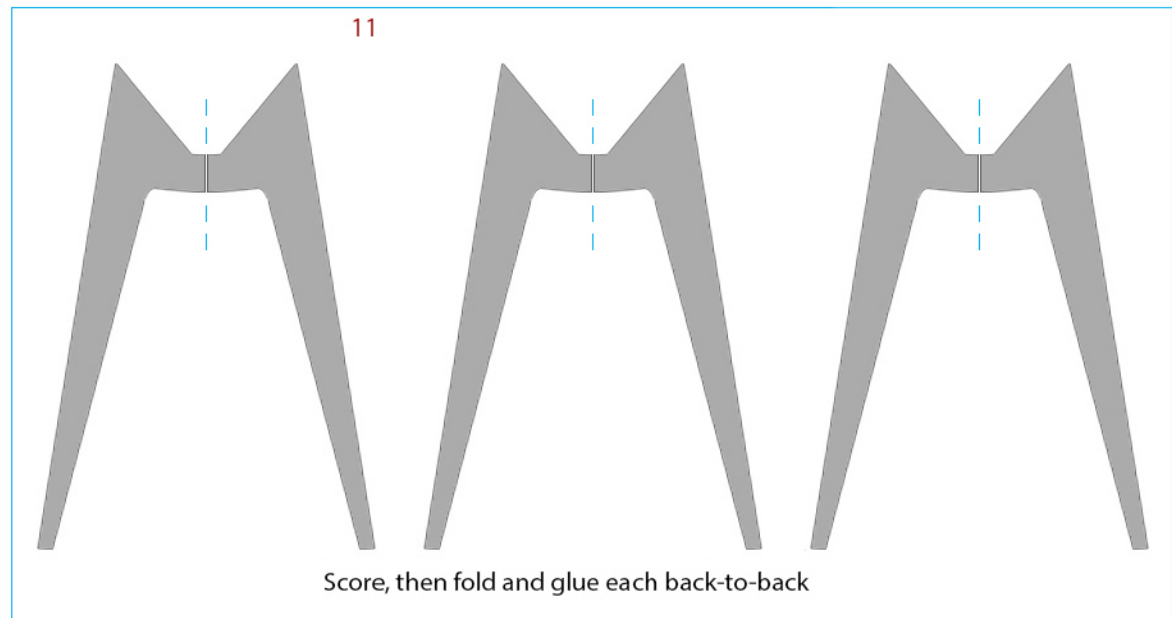
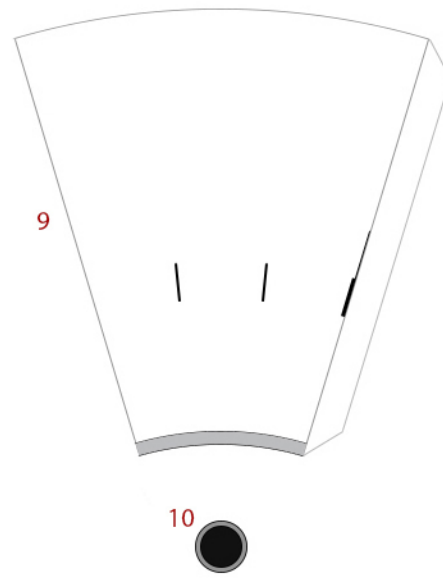
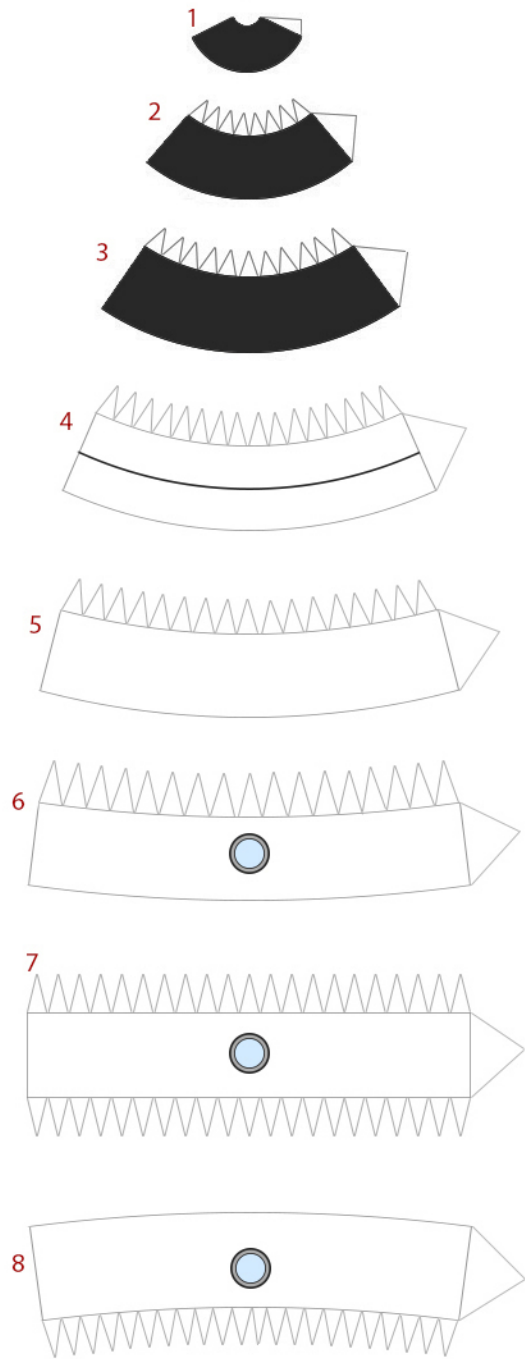
Glue 16 to the bottom of 15

Glue the straight edge of 11 to the Black line on 14 (at the seem) on the boosters (the **larger diameter** circle on 11 is at the **bottom**)

Glue the angle edge on 11 to the three (3) lines on 9

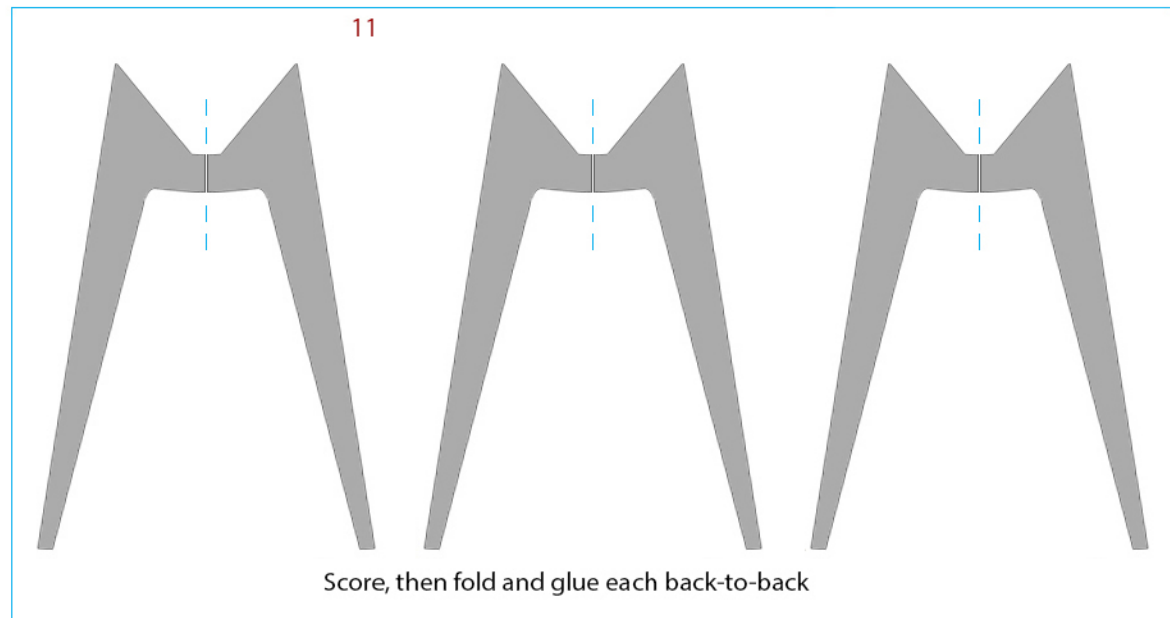
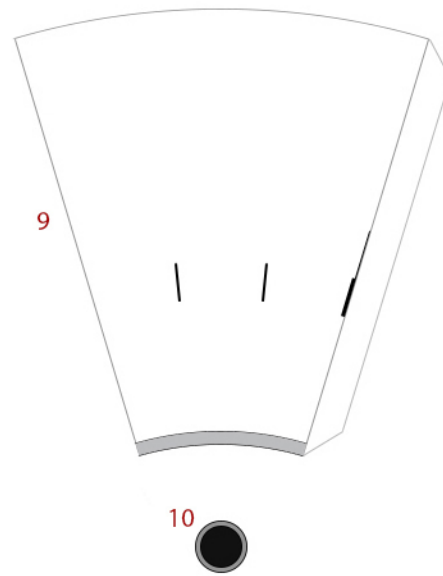
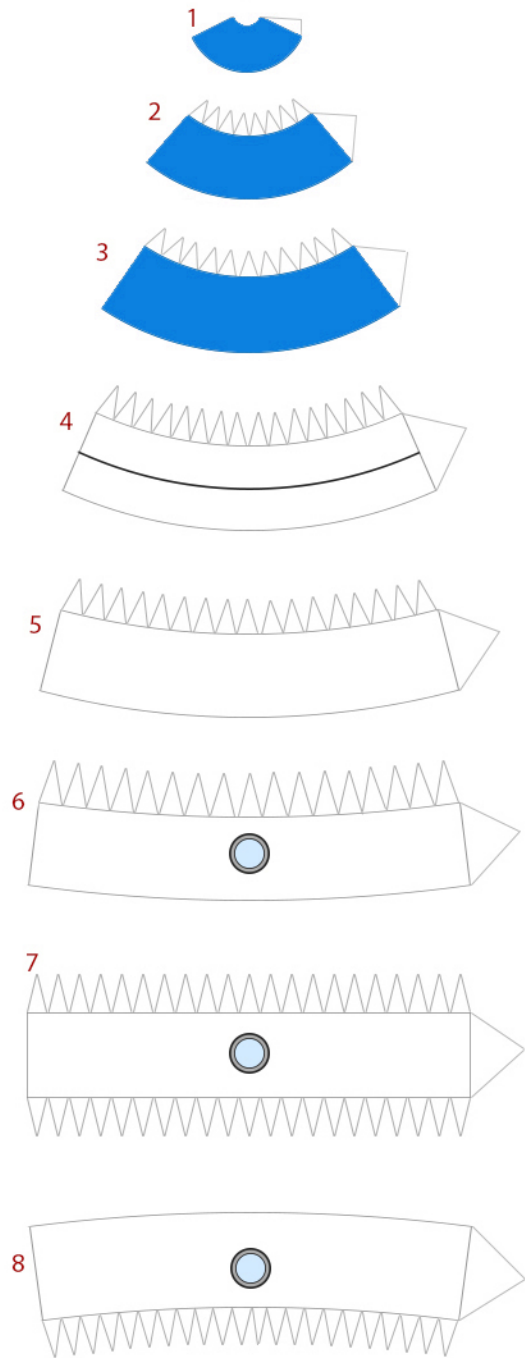
Retro Rocket Ship 65

Black



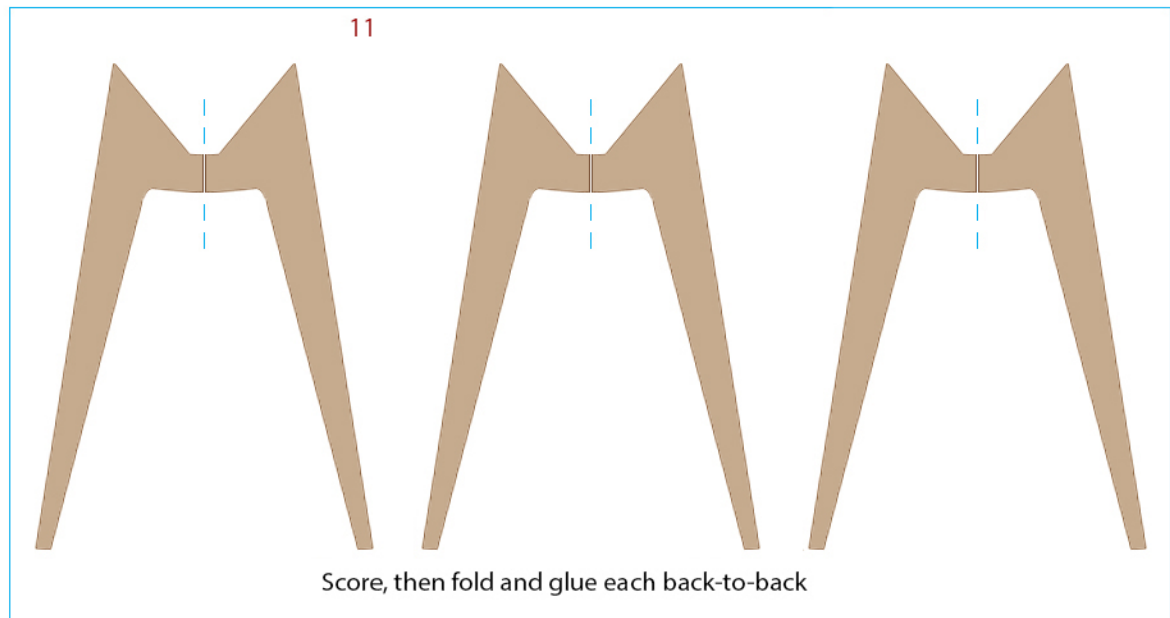
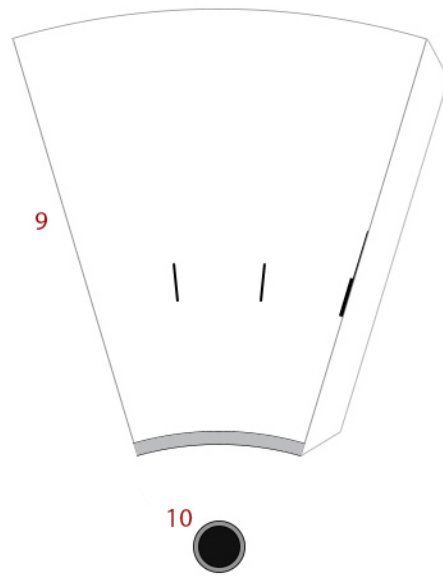
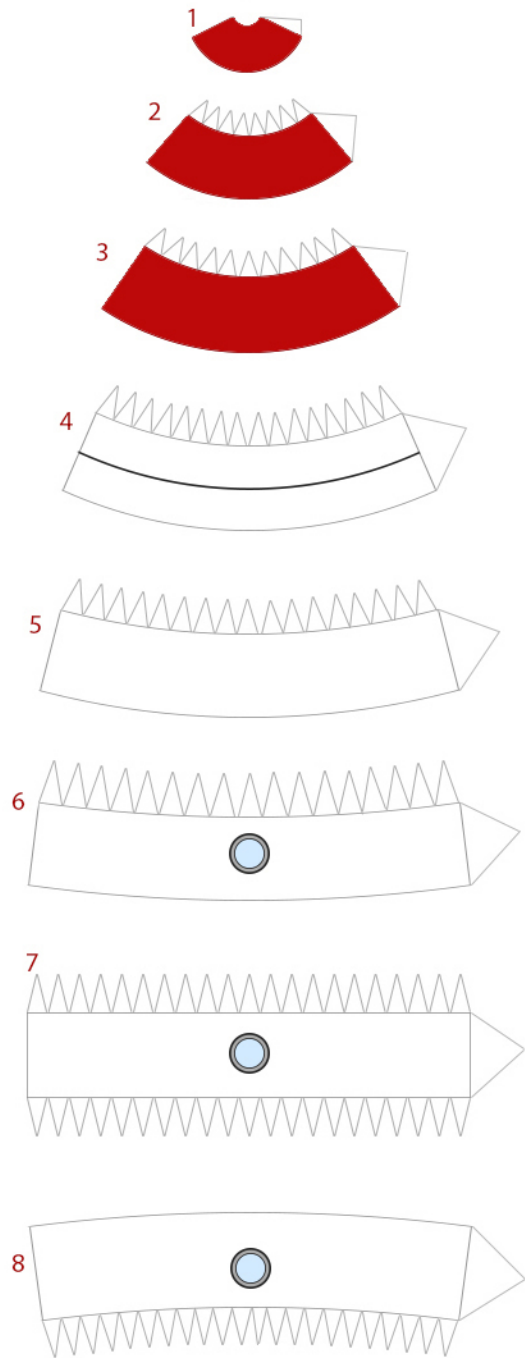
Retro Rocket Ship 65

Blue

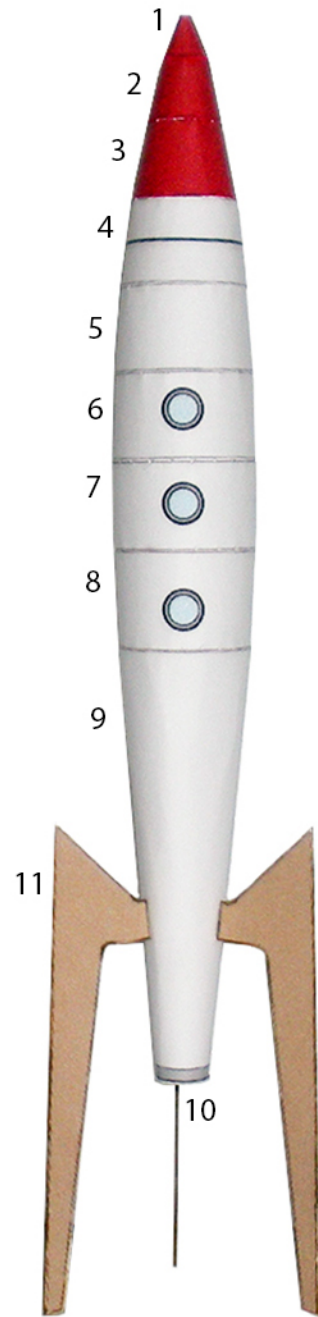


Retro Rocket Ship 65

Red



Instructions

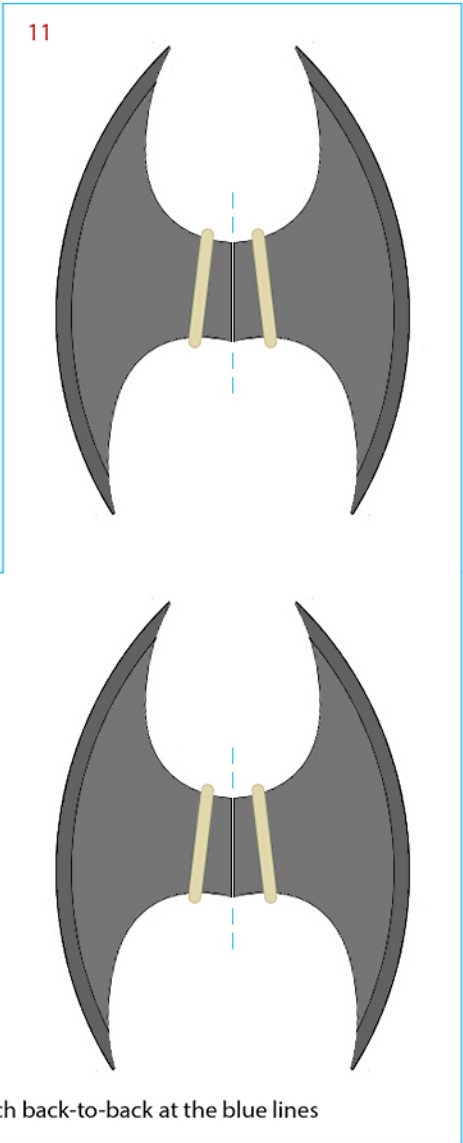
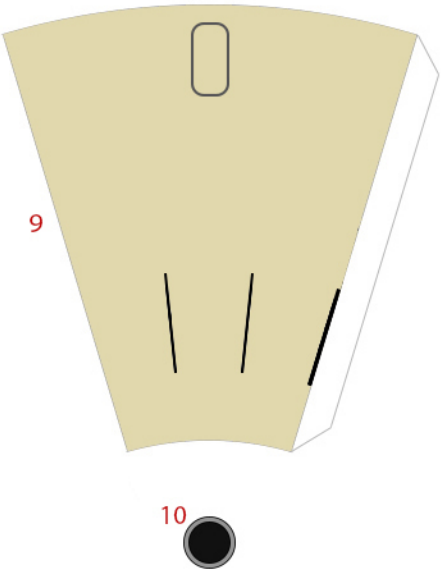
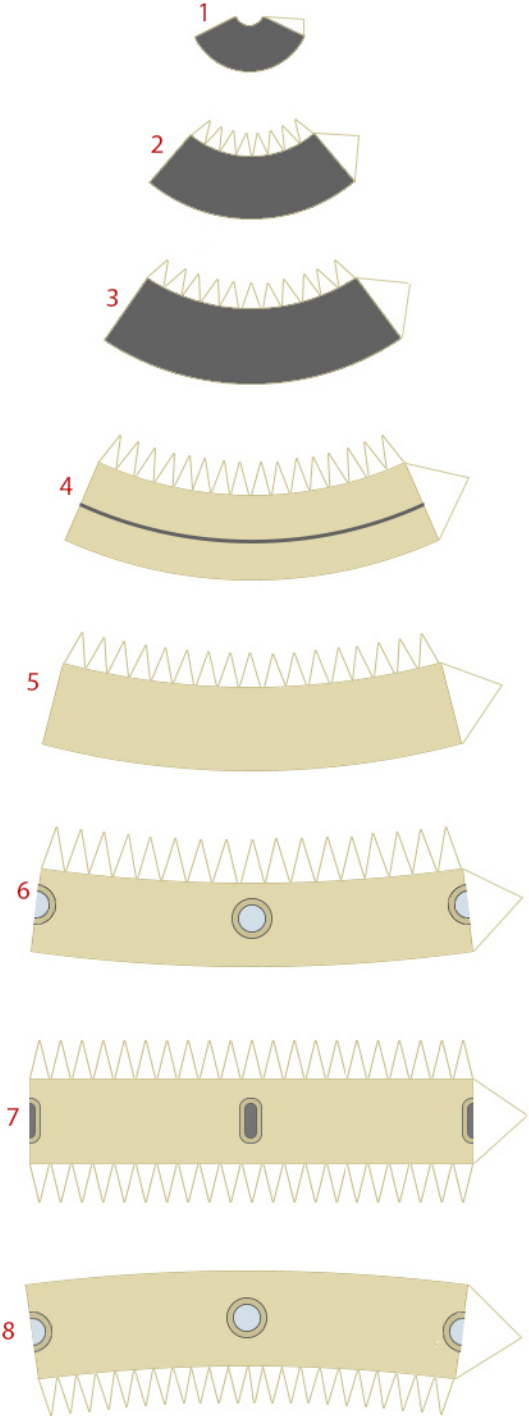


Keep all seems together

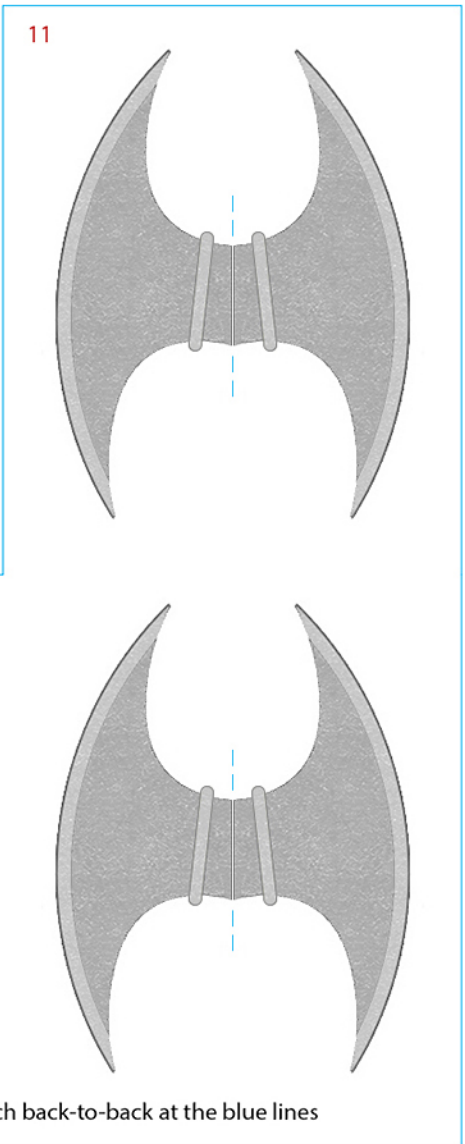
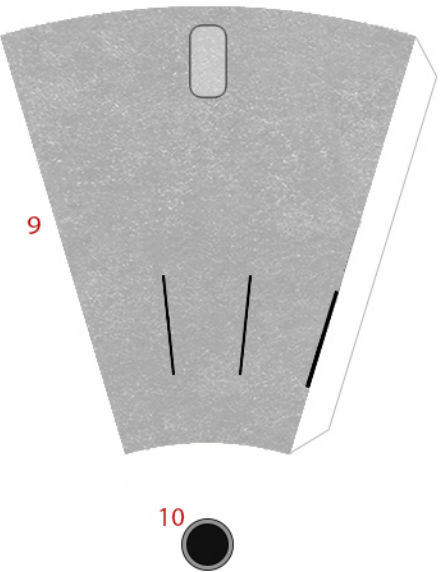
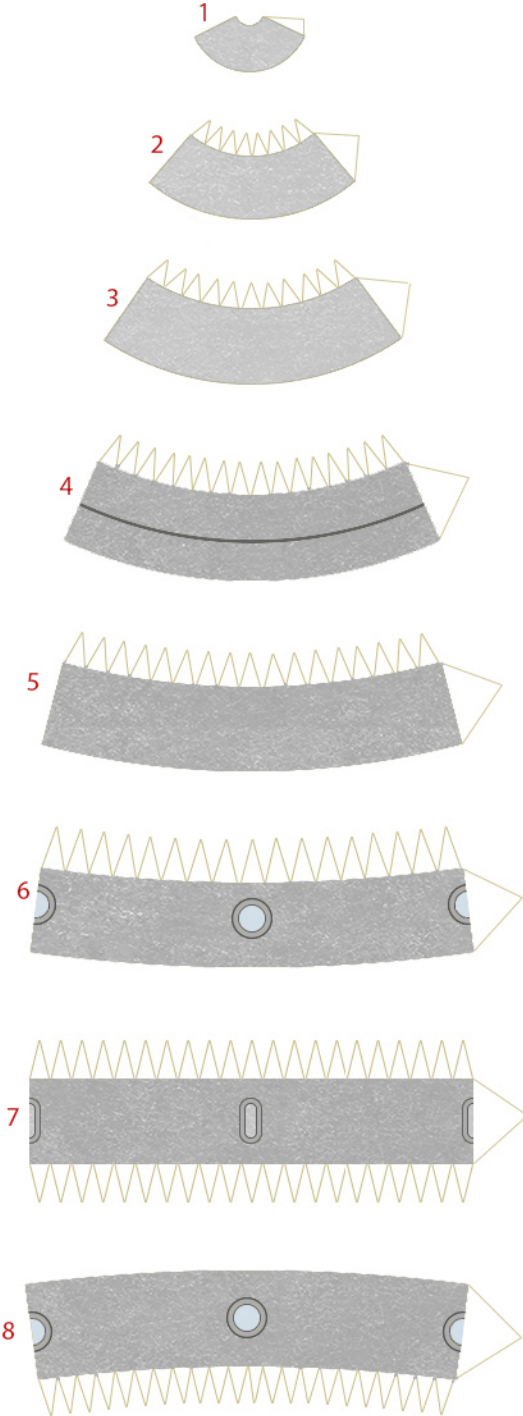
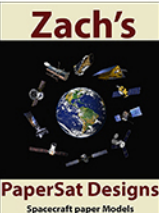
Glue 10 to the bottom of 9

Glue 11 onto the three (3) black lines on 9

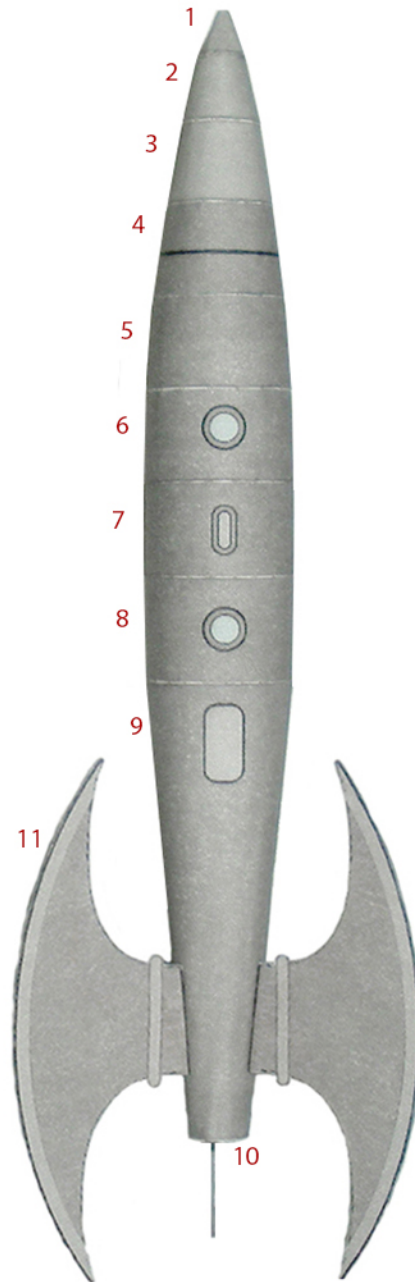
Retro Rocket Ship 66



Retro Rocket Ship 66



Instructions

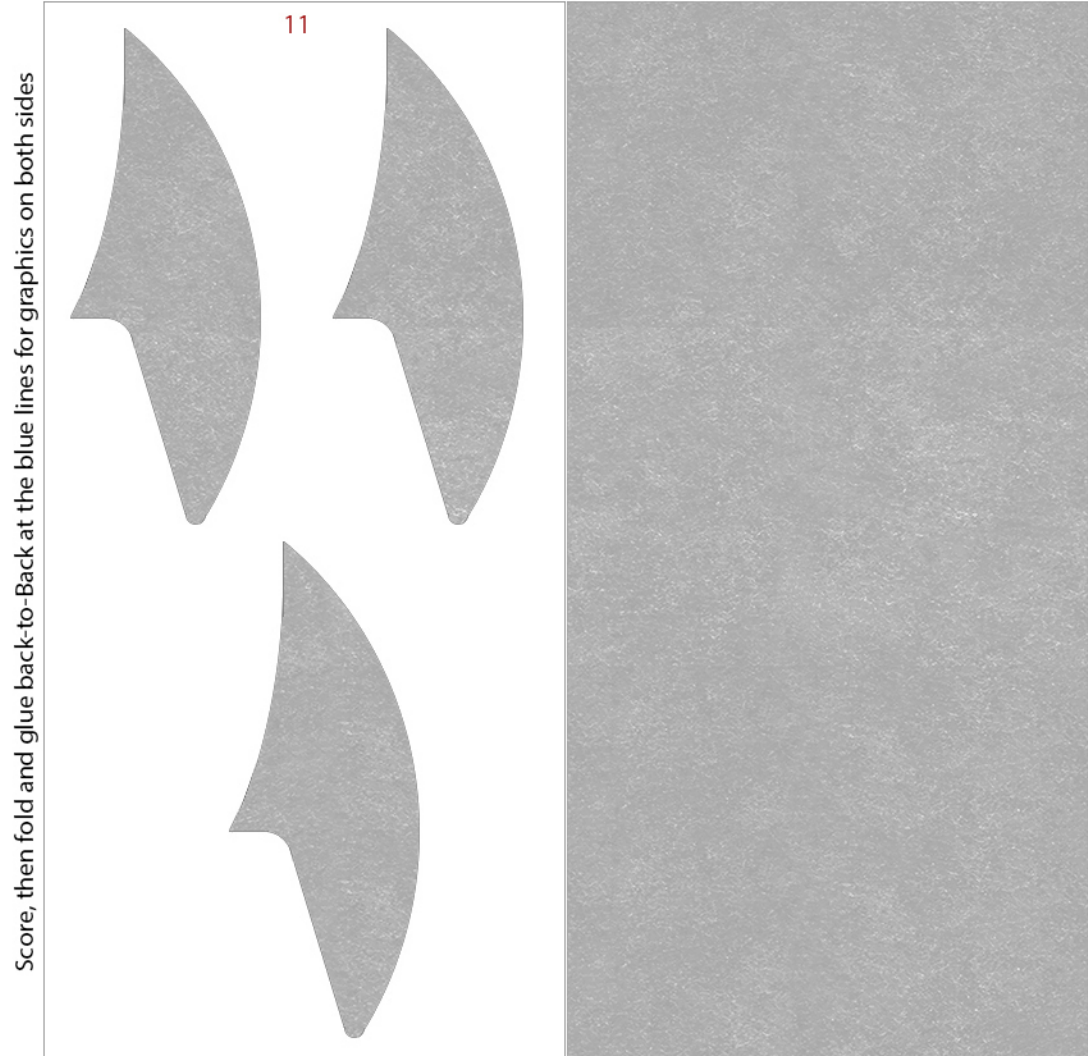
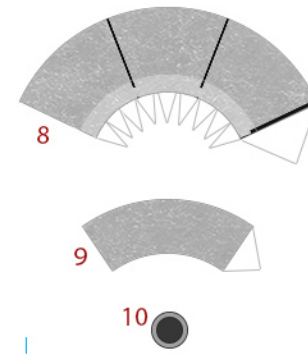
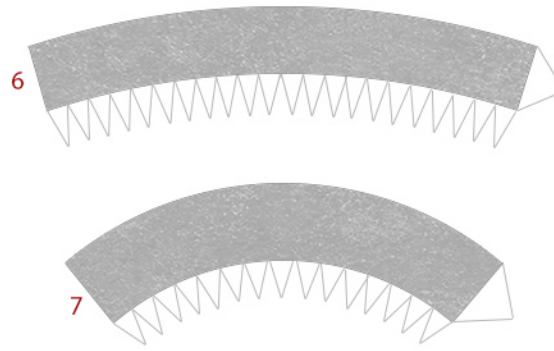
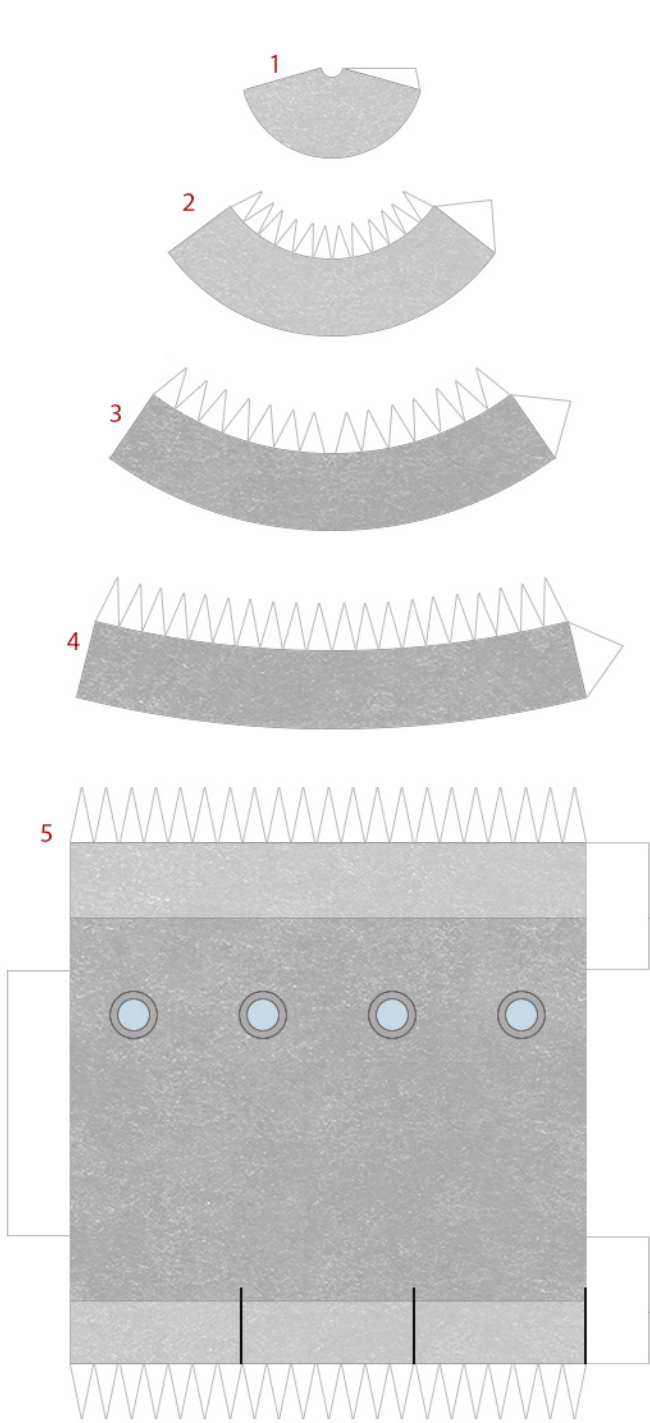


Keep all seems together

GLue 10 to the bottom of 9

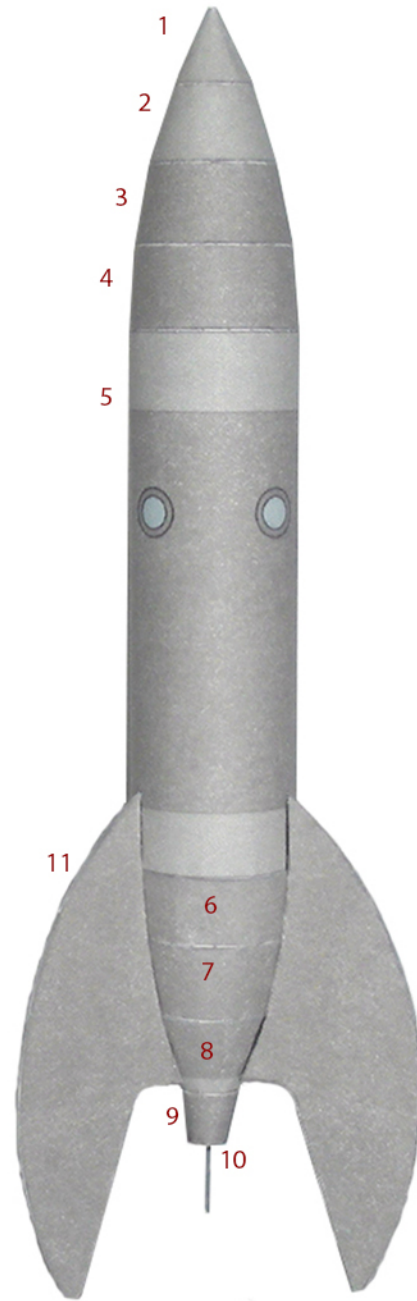
Glue 11 onto the three (3) black lines on 9

Retro Rocket Ship 67



Score, then fold and glue back-to-back at the blue lines for graphics on both sides

Instructions

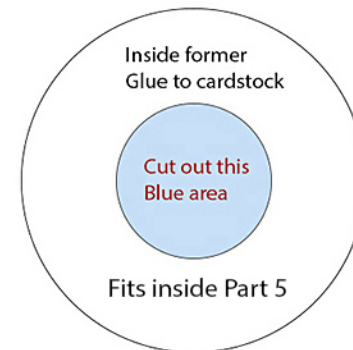
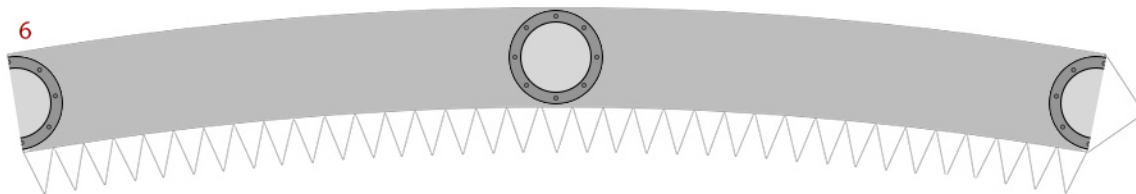
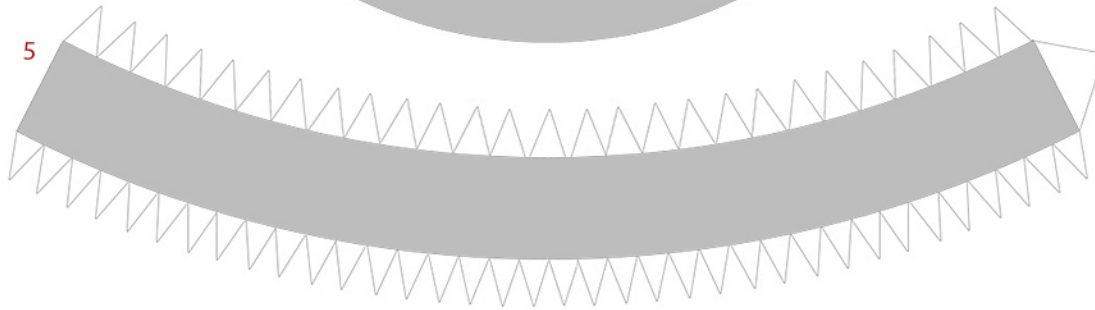
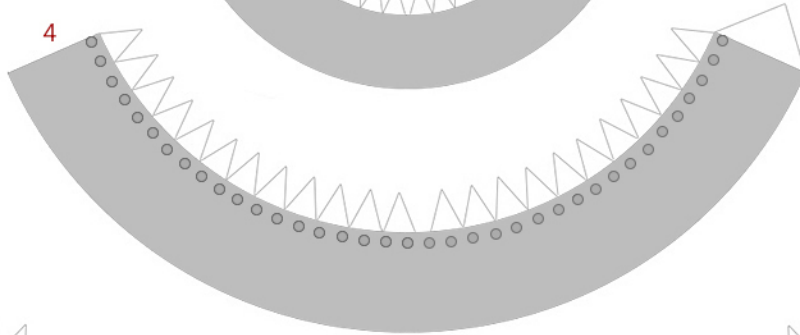
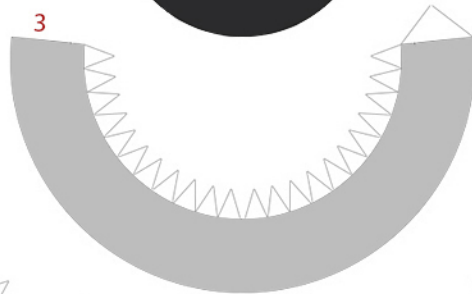
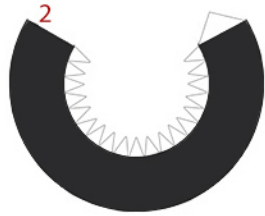


Keep all seems together

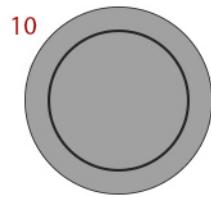
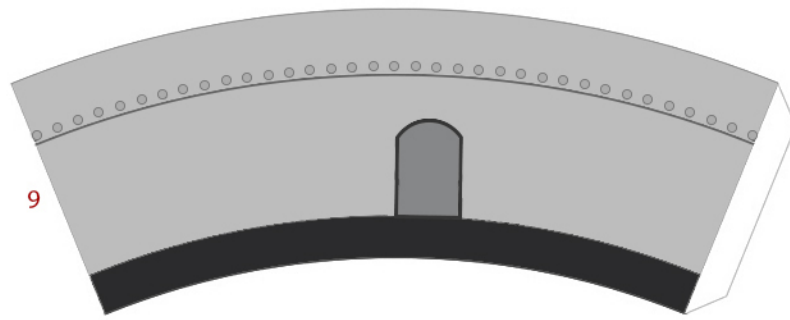
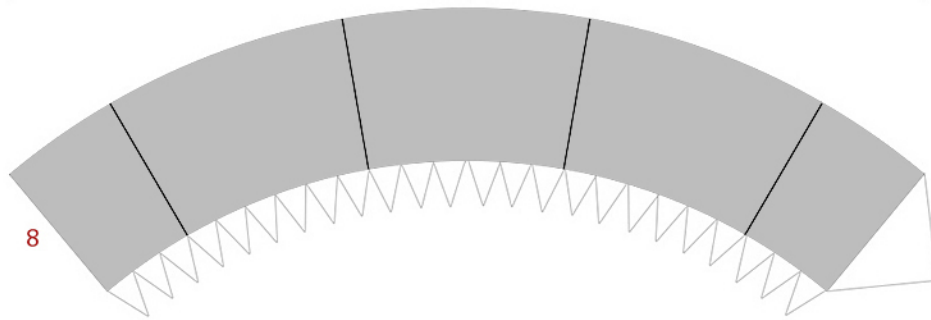
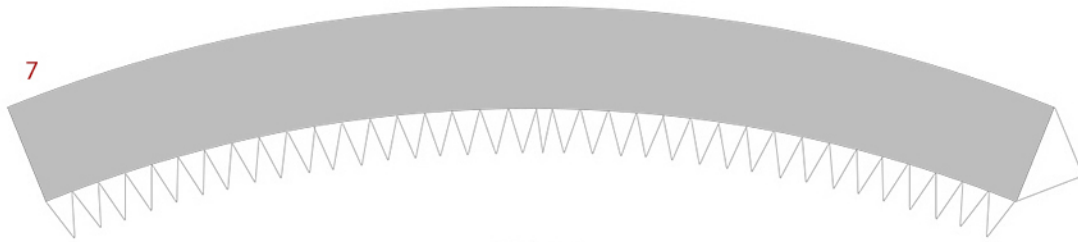
Glue 10 to the bottom of 9

Glue 11 onto the black lines on 5 and 8

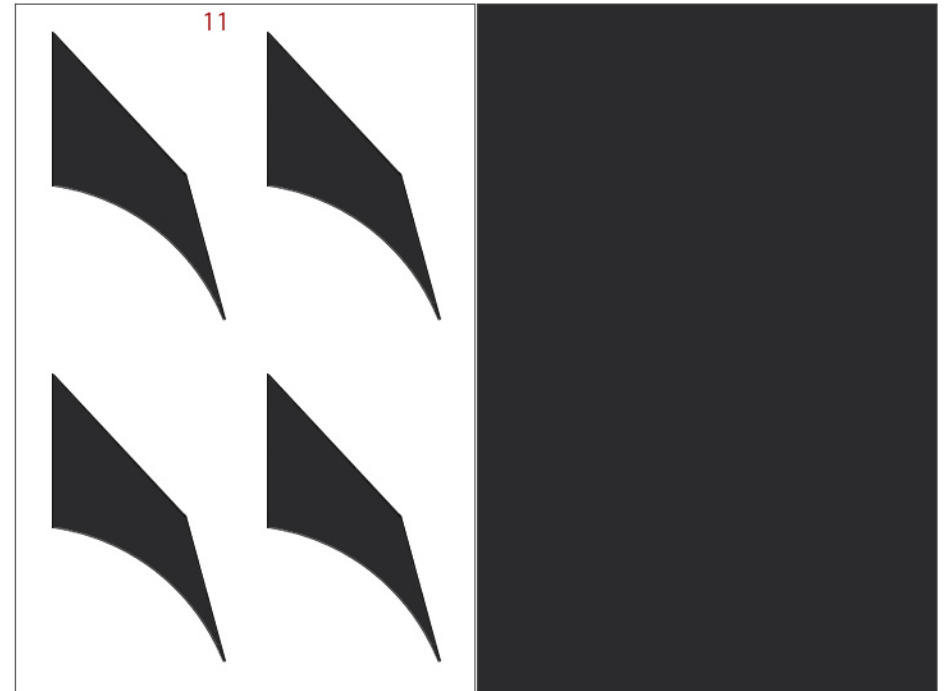
Retro Rocket Ship 68



Retro Rocket Ship 68

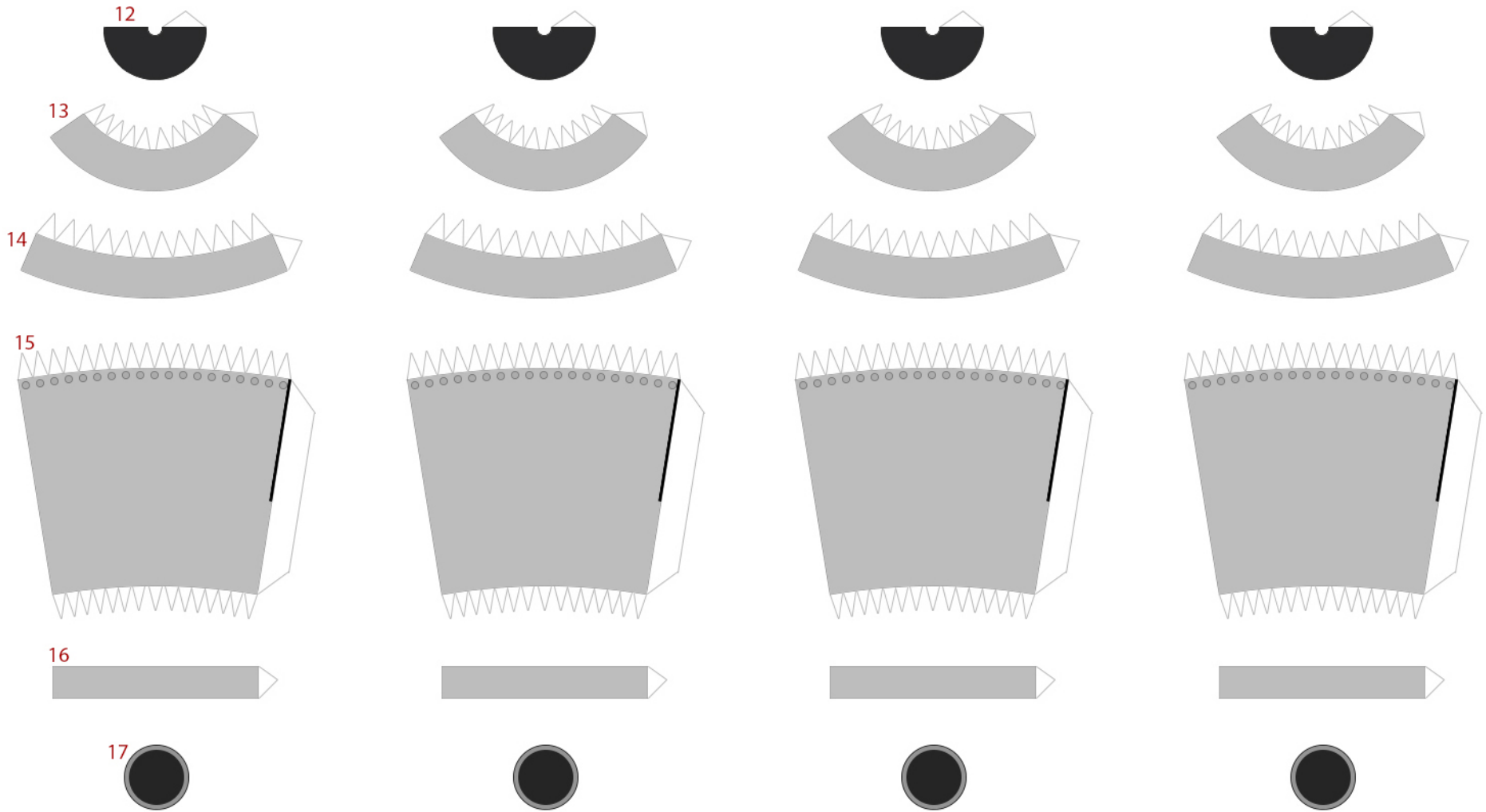


Glue to cardstock
Fits inside bottom of Part 10 above



Fold and glue back-to-back for color on both sides

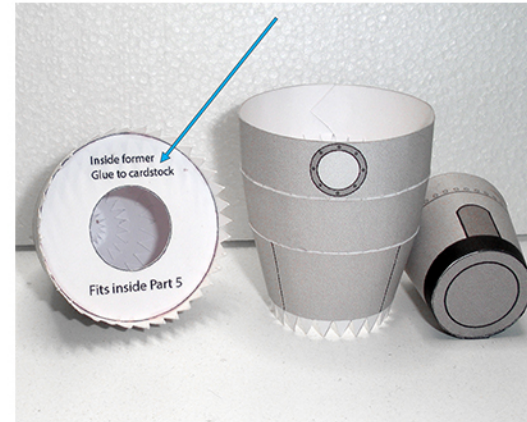
Retro Rocket Ship 68



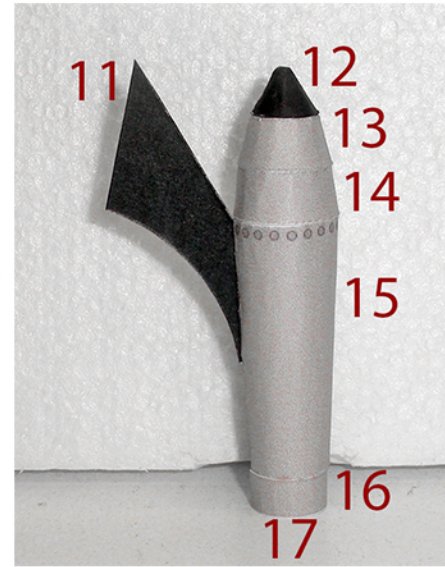
Instructions



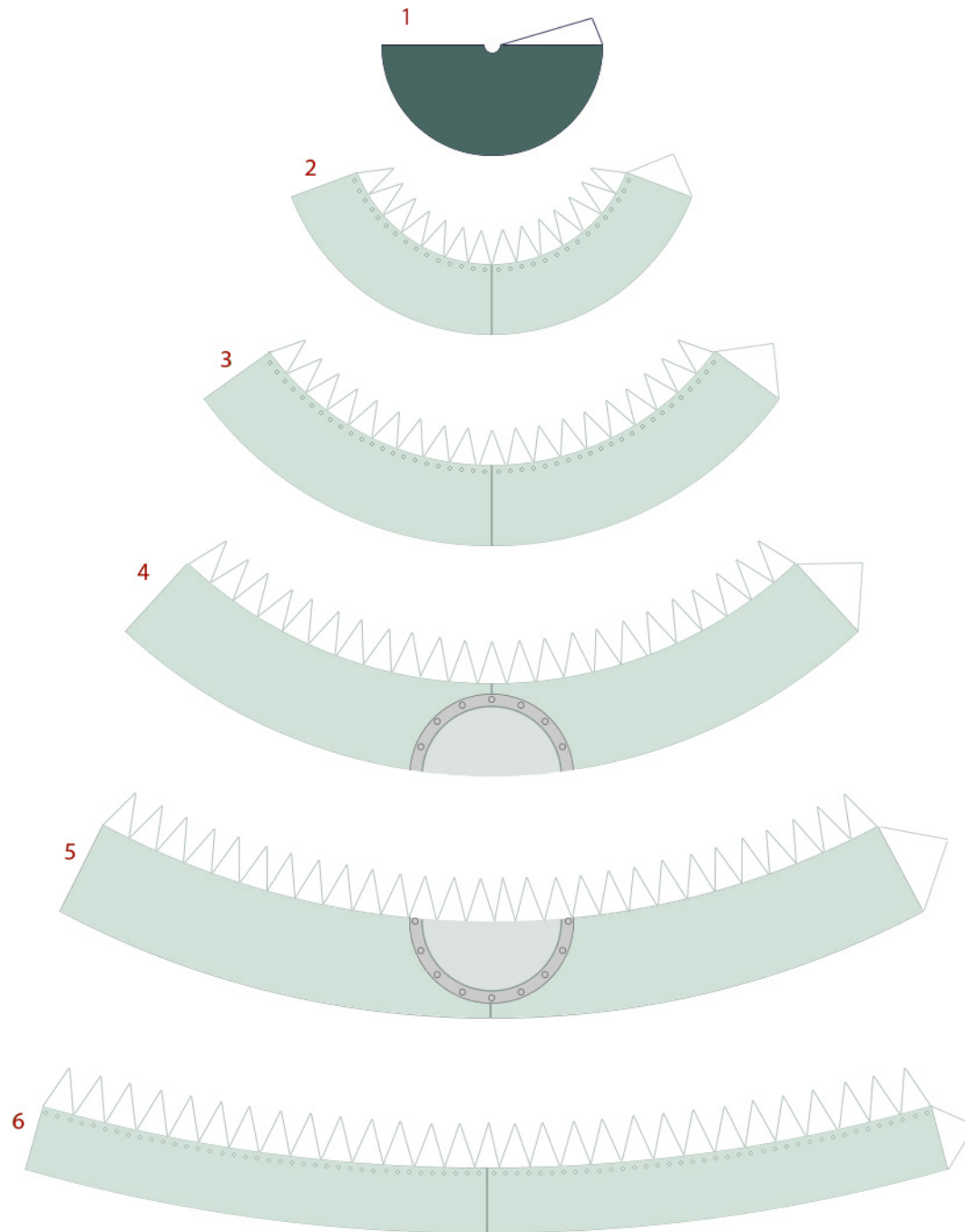
Keep all Seams Together
Part 10 is glued inside bottom of 9



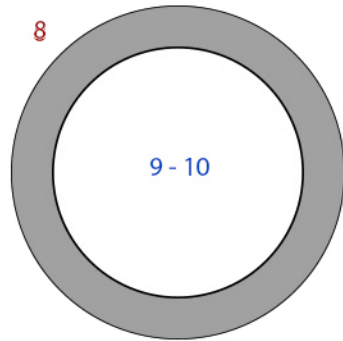
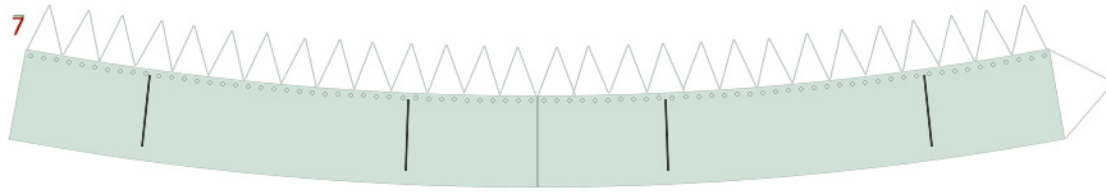
Former is glued inside of Part 5 to create a good round shape



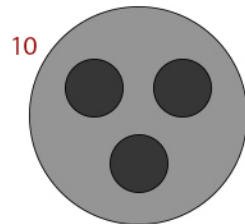
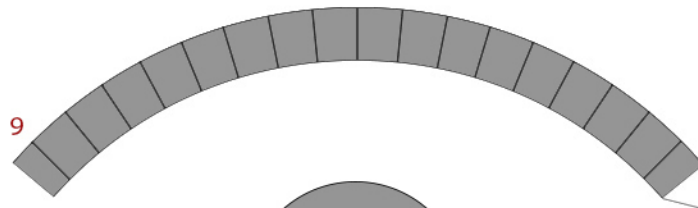
Glue outside edge on Part 11 onto the Black line (at the seem) on 15 as shown. Glue the other edge on 11 onto the four(4) Black lines on the body as shown - Your model is done.



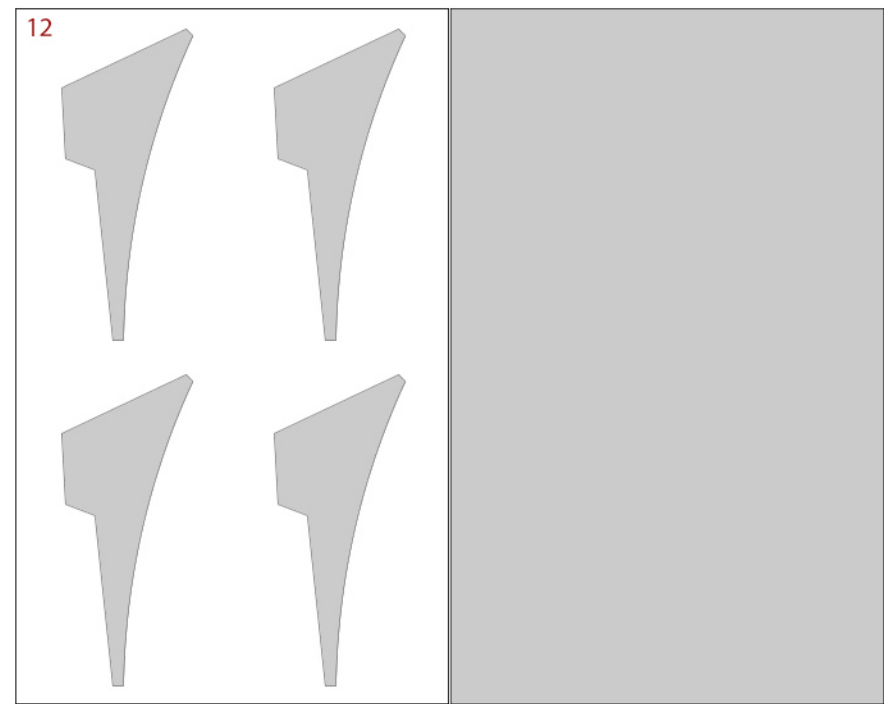
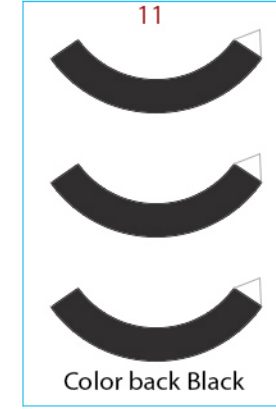
Retro Rocket Ship 69

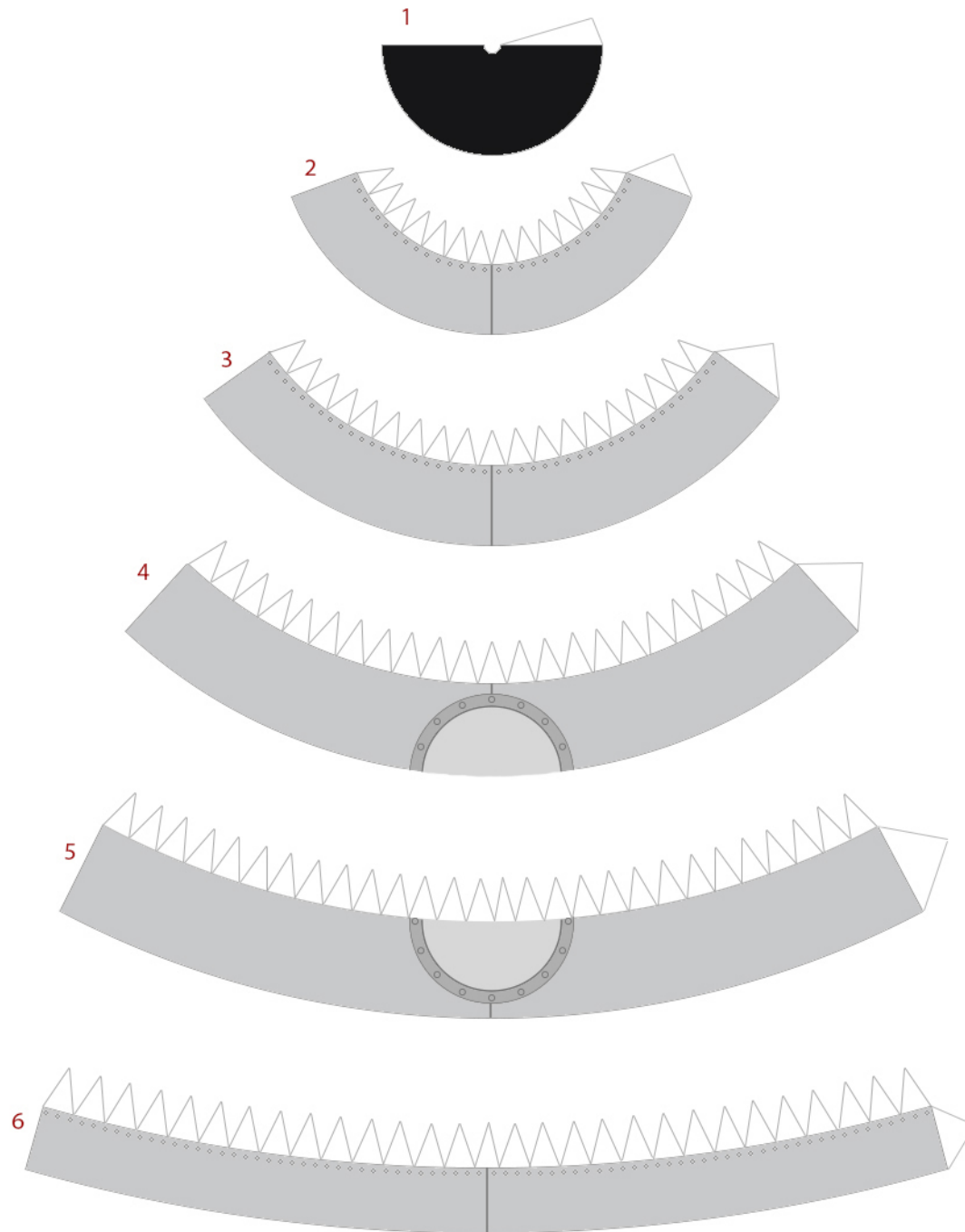


Glue to cardstock, fit inside the part above

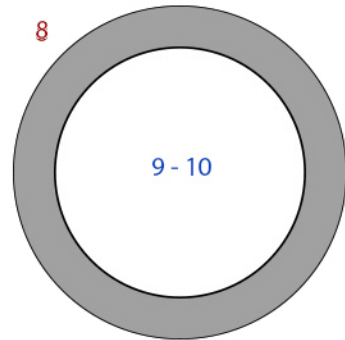
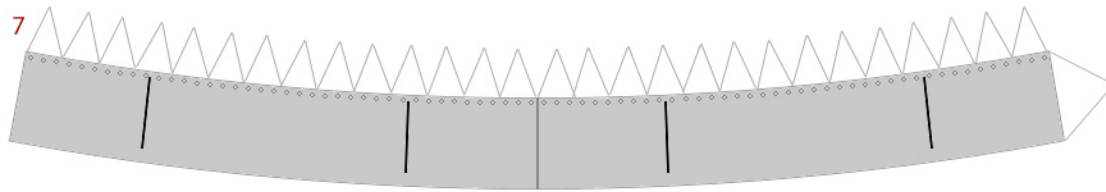


Glue to cardstock, fit inside the part above

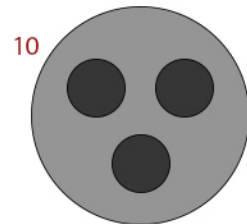
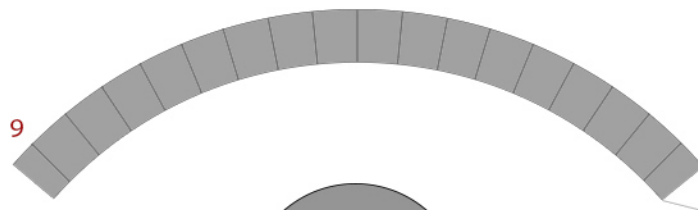




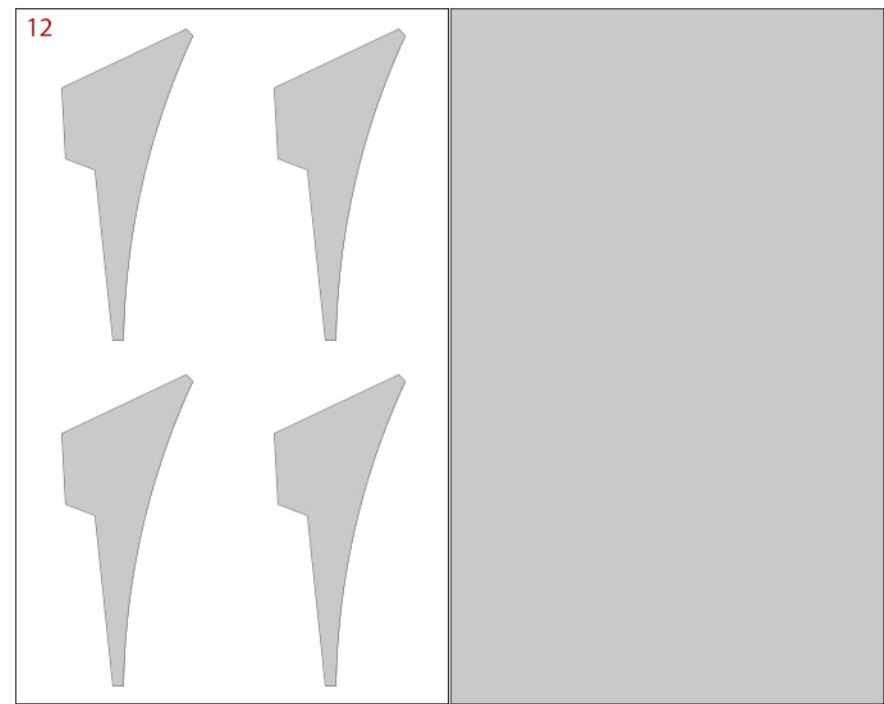
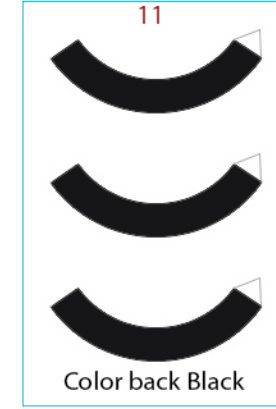
Retro Rocket Ship 69

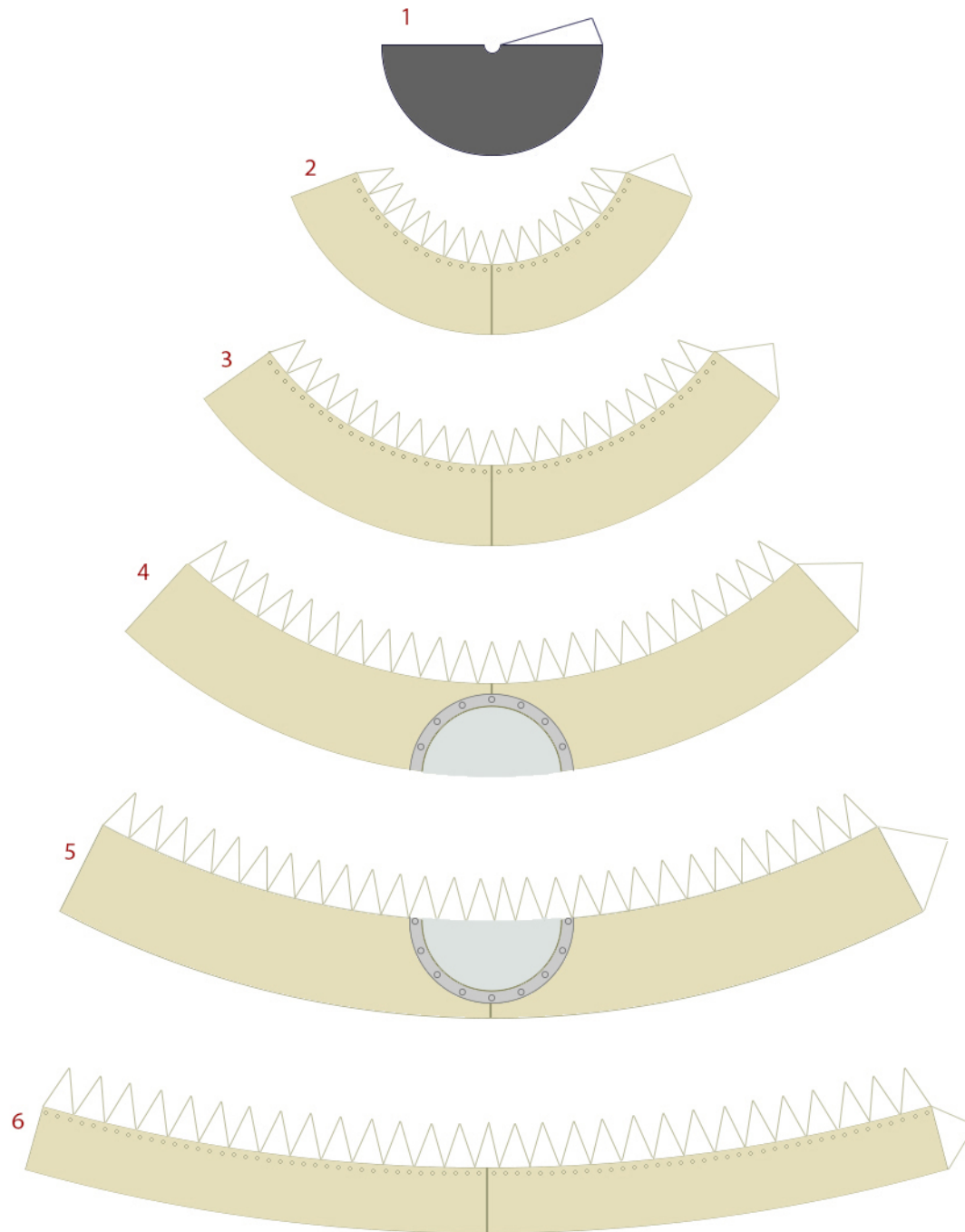


Glue to cardstock, fit inside the part above

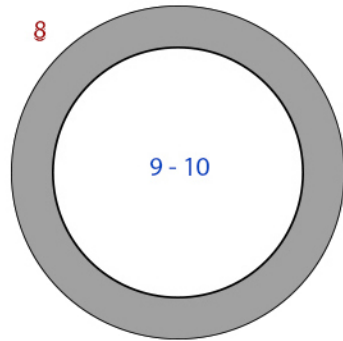
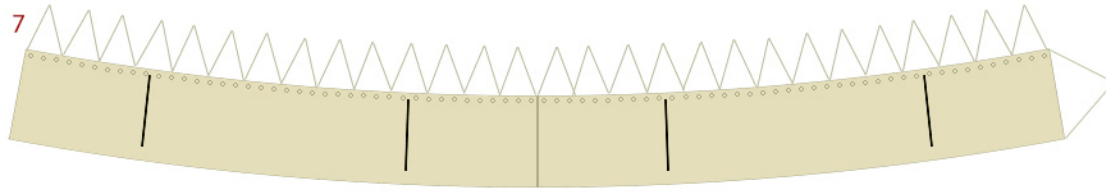


Glue to cardstock, fit inside the part above

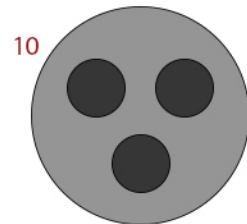
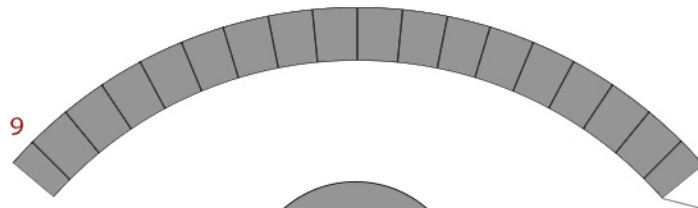




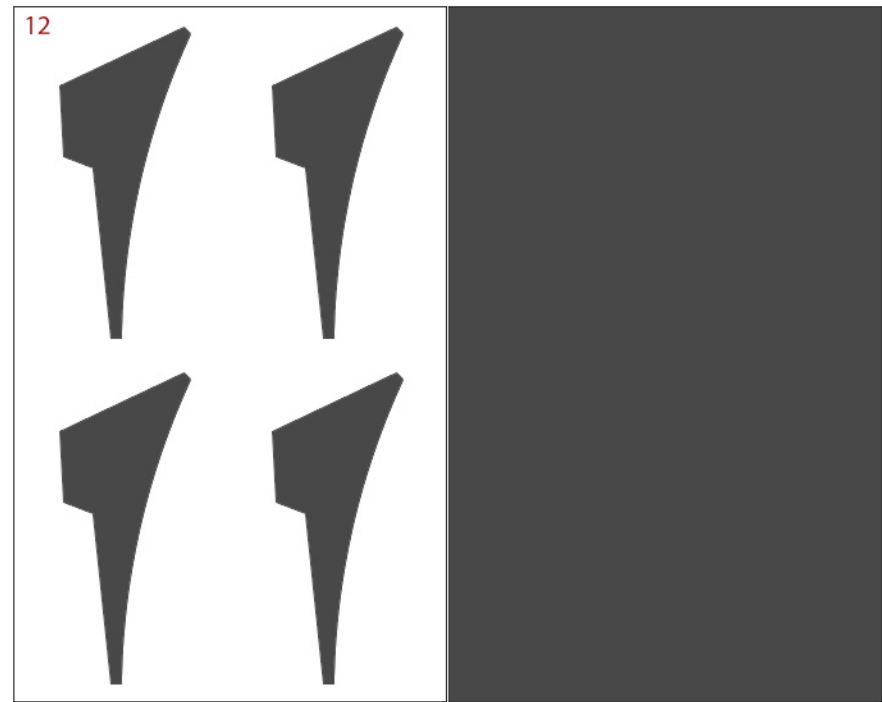
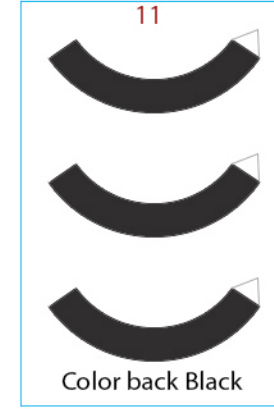
Retro Rocket Ship 69



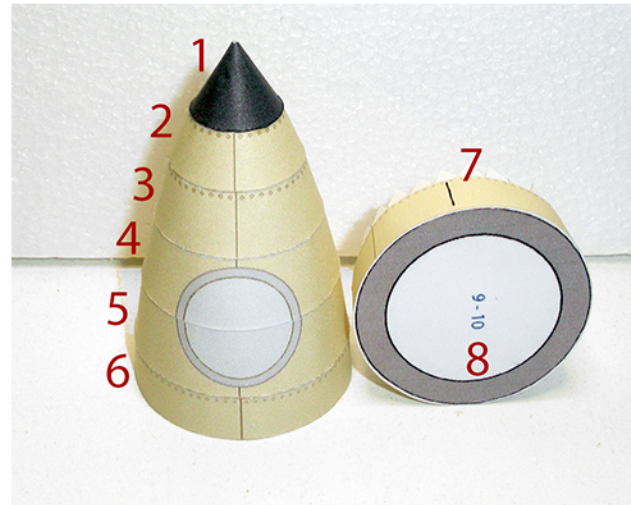
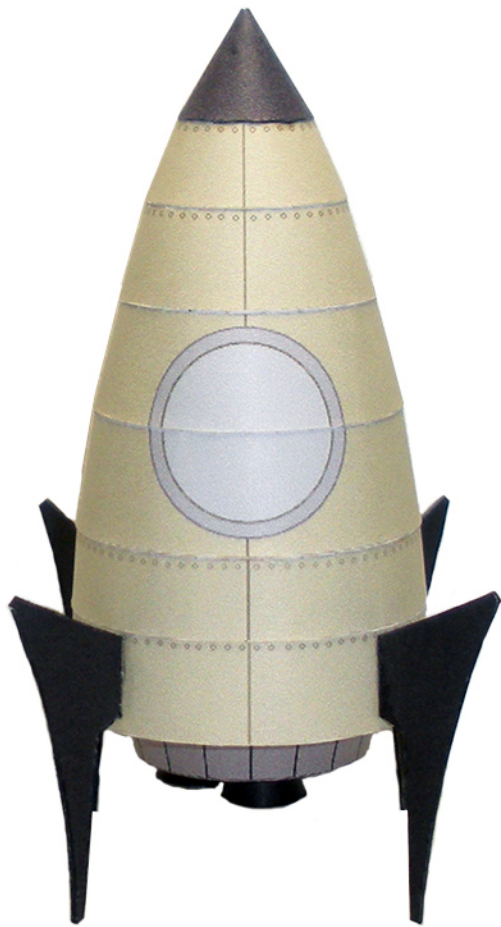
Glue to cardstock, fit inside the part above



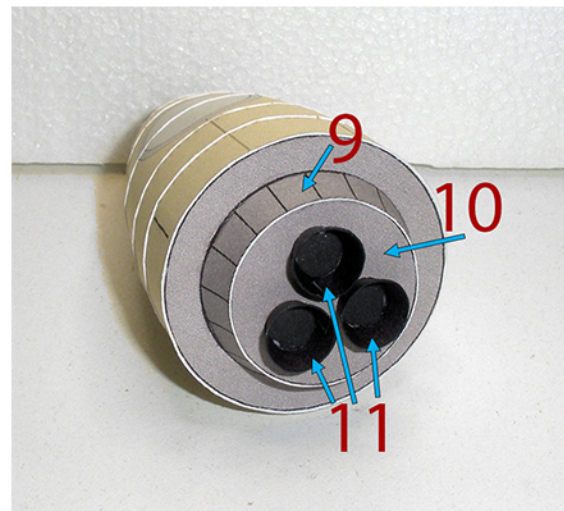
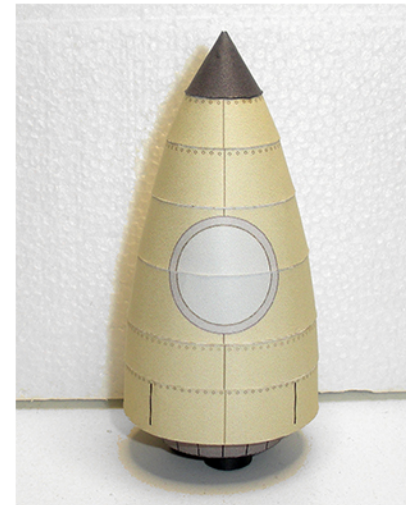
Glue to cardstock, fit inside the part above



Retro Rocket Ship 69



Keep all seems together
Part 8 fits inside bottom of Part 7

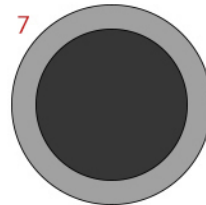
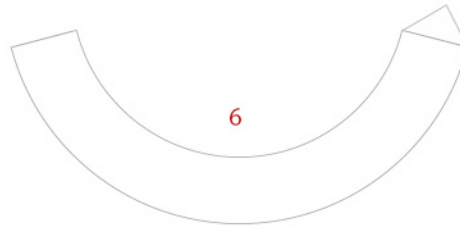
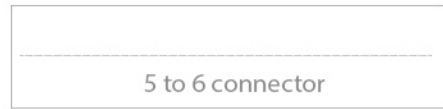
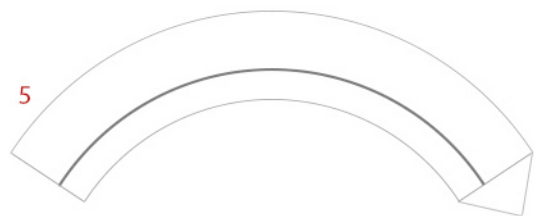
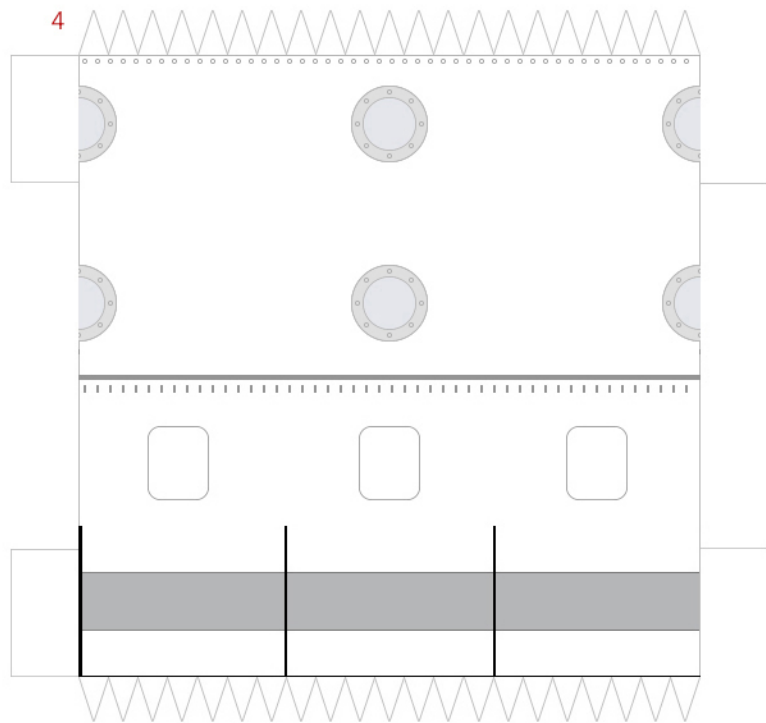
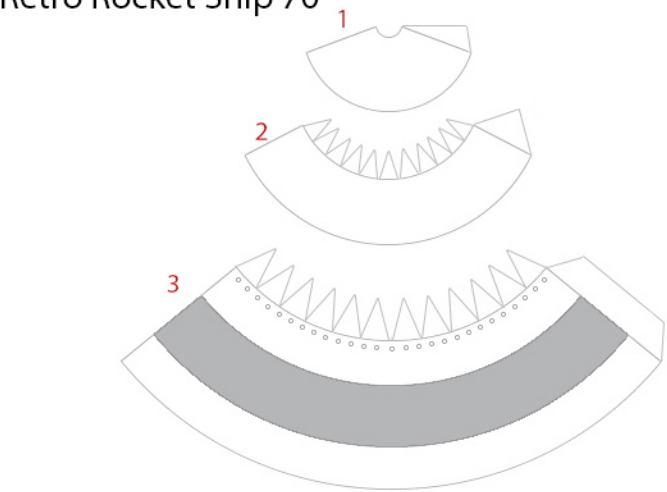


Part 10 fits inside bottom of Part 9



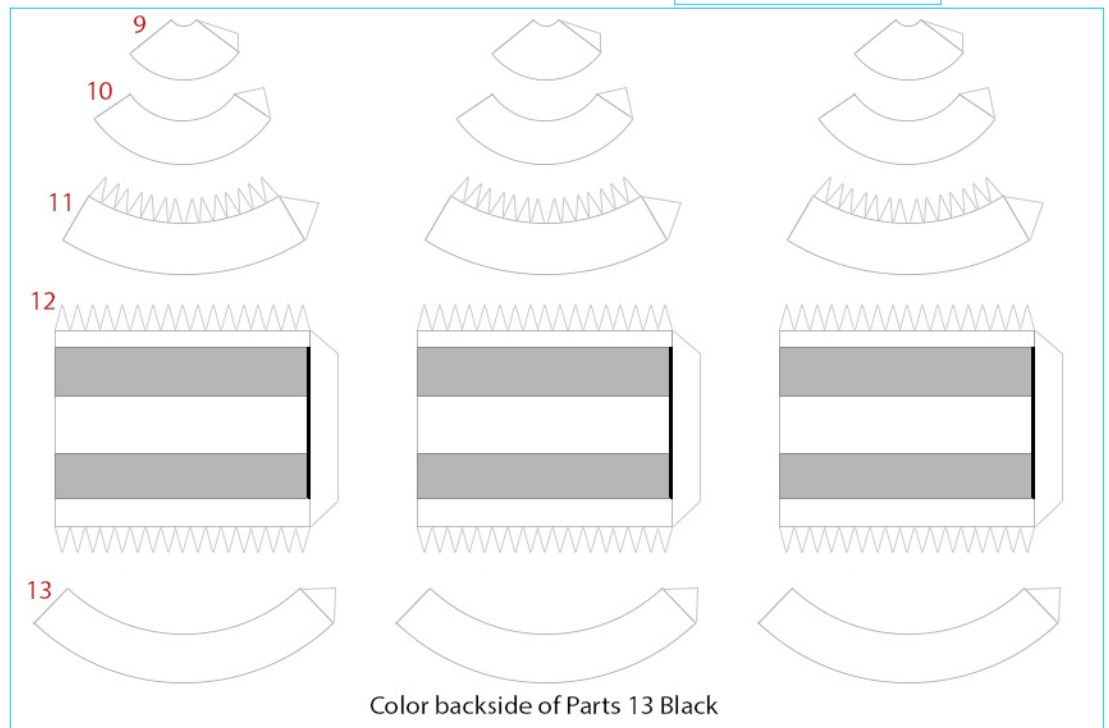
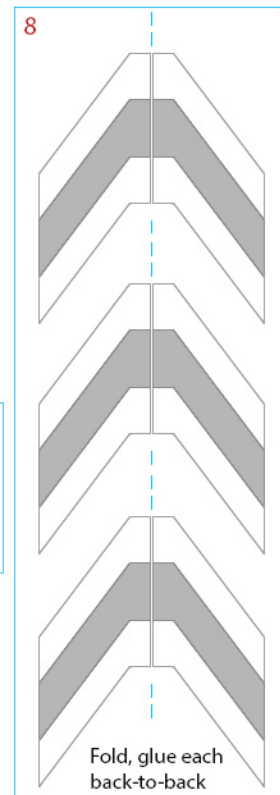
Glue the fins (Parts 12) to the four (4)
Black lines on 7 as shown.
Your model is done.

Retro Rocket Ship 70

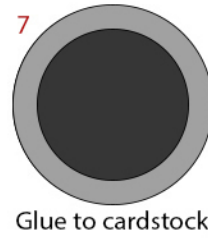
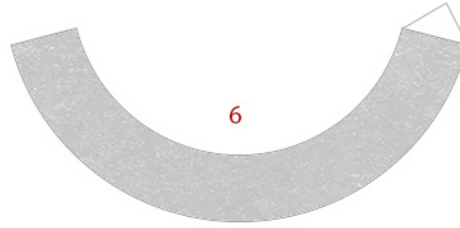
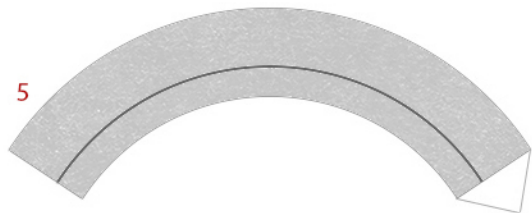
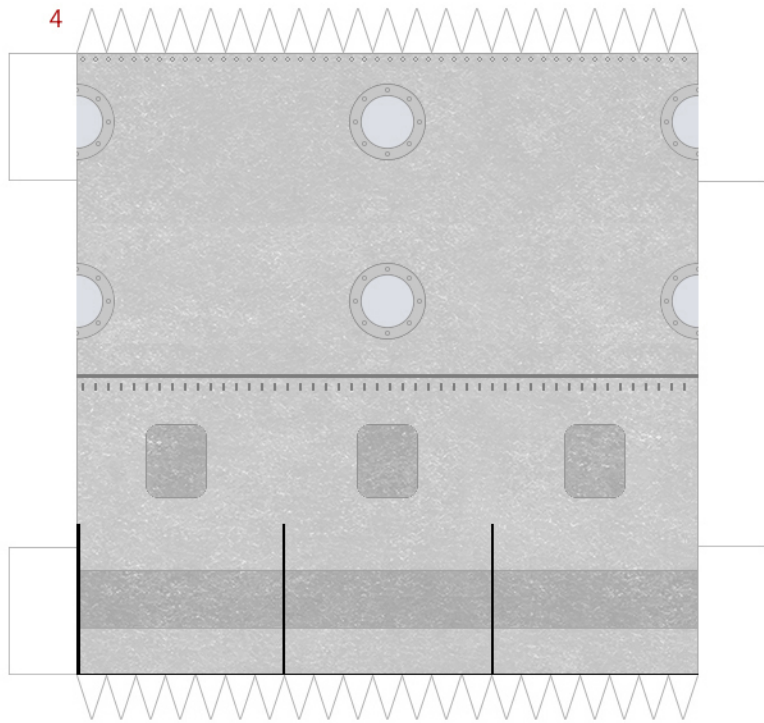
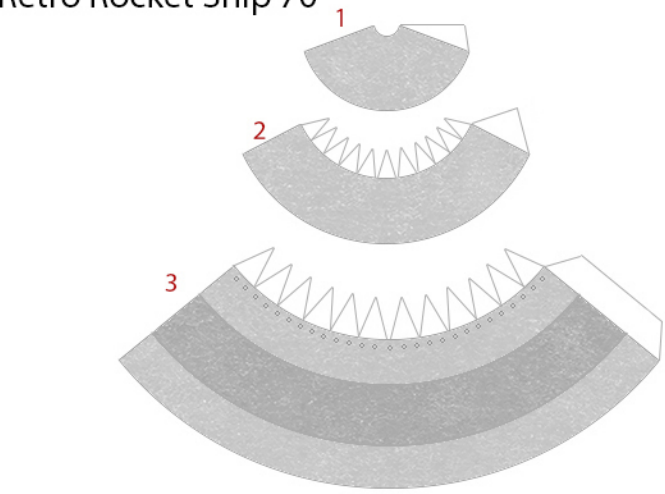


Glue to cardstock, fits inside bottom of Part 6 above

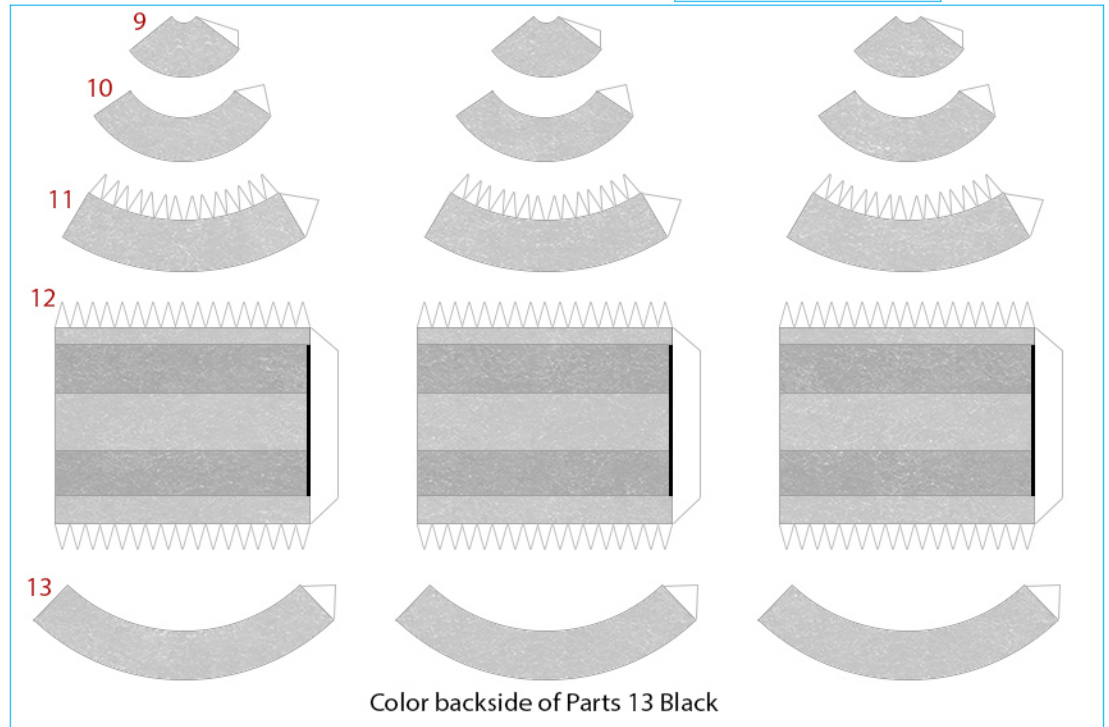
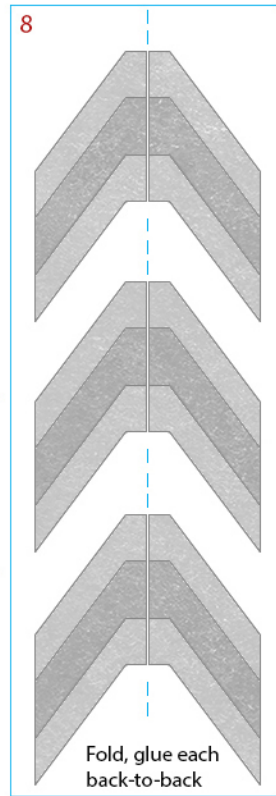
Cut plastic broom straw or similar material the same length as the line above for the antenna



Retro Rocket Ship 70

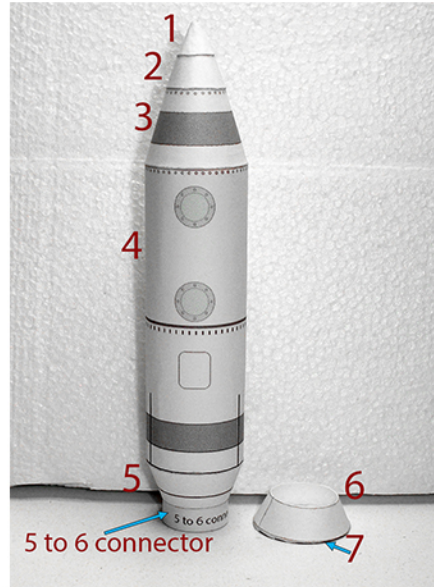
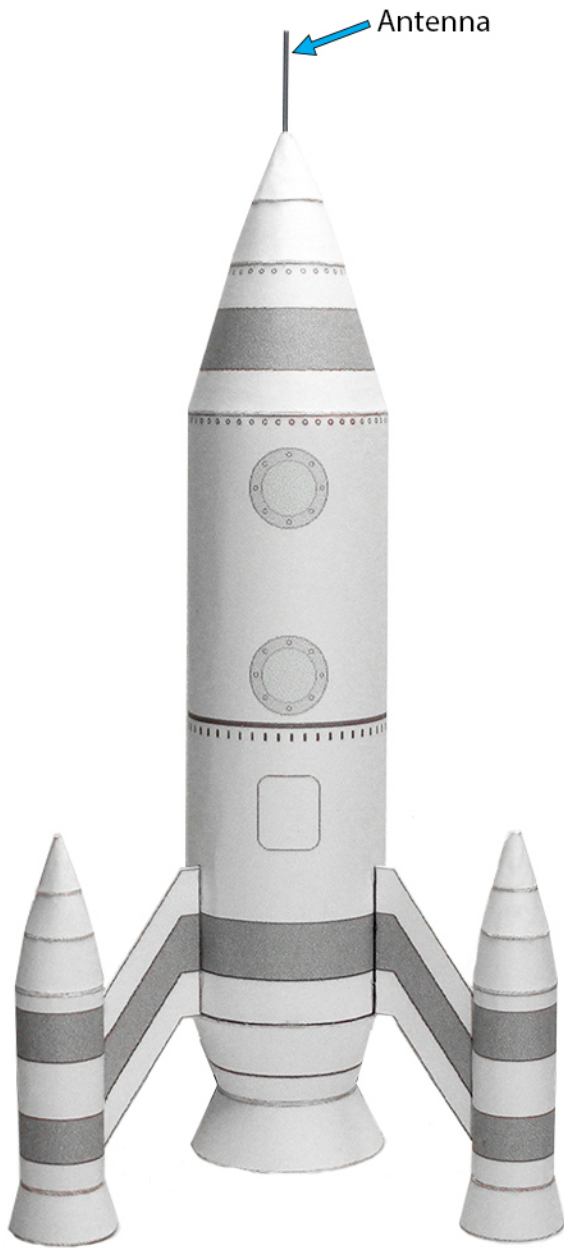


Cut plastic broom straw or similar material the same length as the line above for the antenna

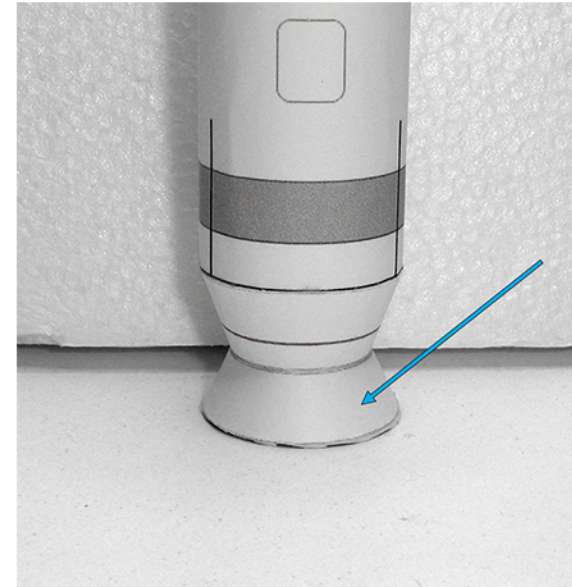


Color backside of Parts 13 Black

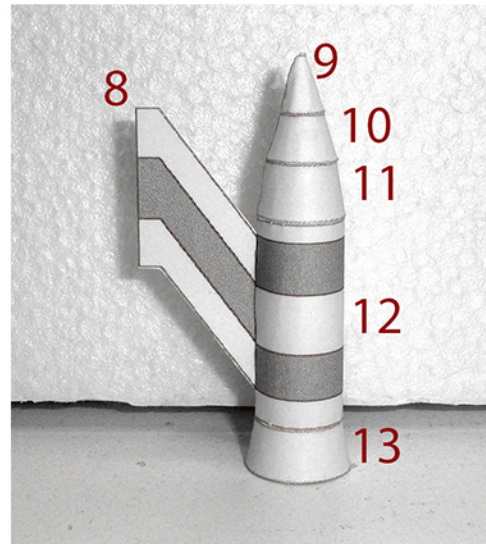
Retro Rocket Ship 70



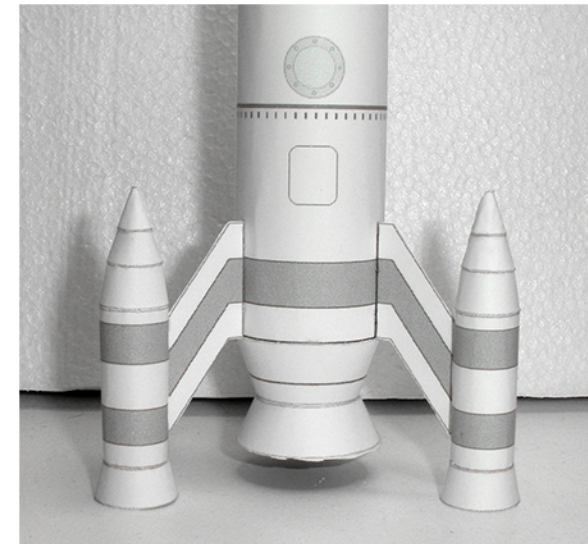
Keep all seems together
 Glue 5 to 6 connector up to the dotted line inside
 bottom of Part 5, 7 is glued to the bottom of 6



Slide 6 through the connector and glue onto 5.

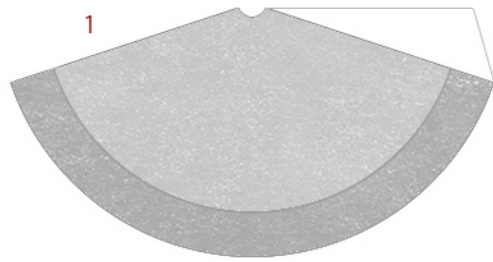


Glue 8 onto the black line on 12
 Make three (3) of these

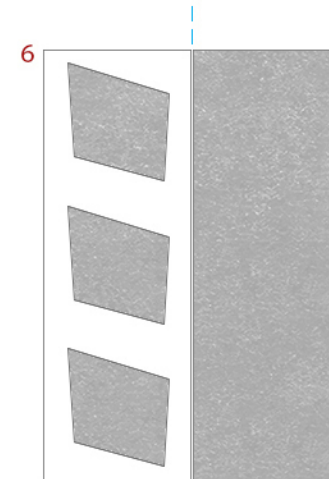
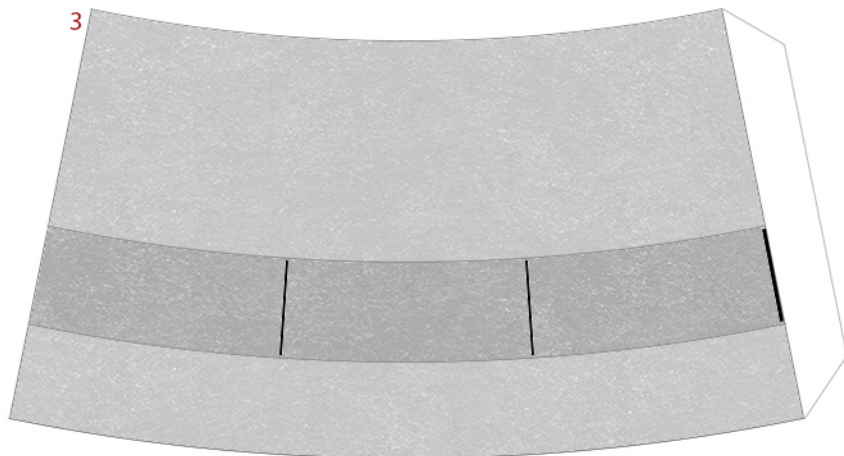
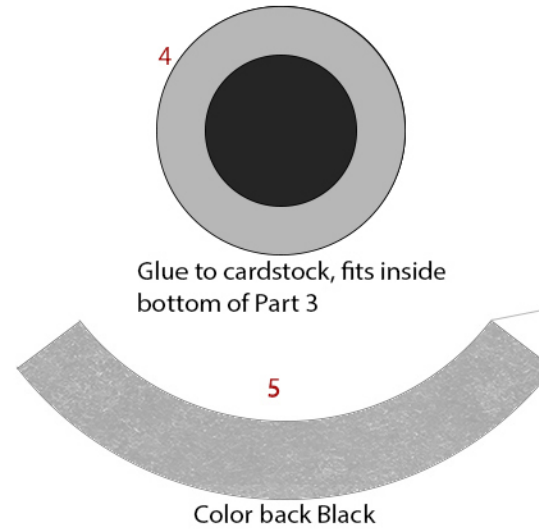
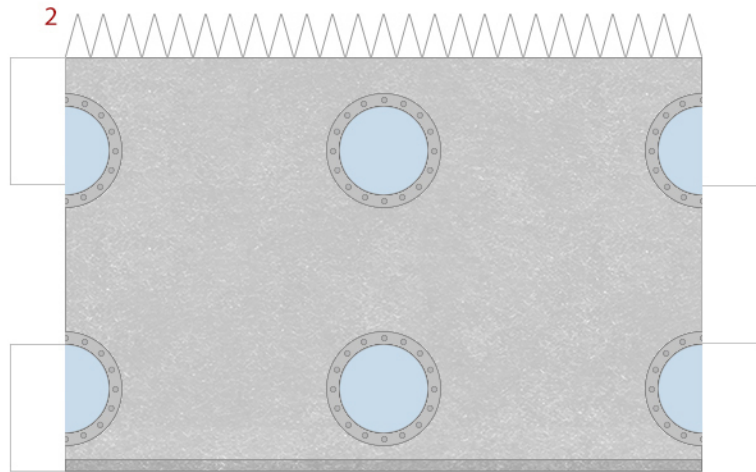


Glue onto the black lines on the body as shown.
 Cut and slide the antenna onto top of Part 1 and
 glue in place.
 Your model is done.

Retro Rocket Ship 71

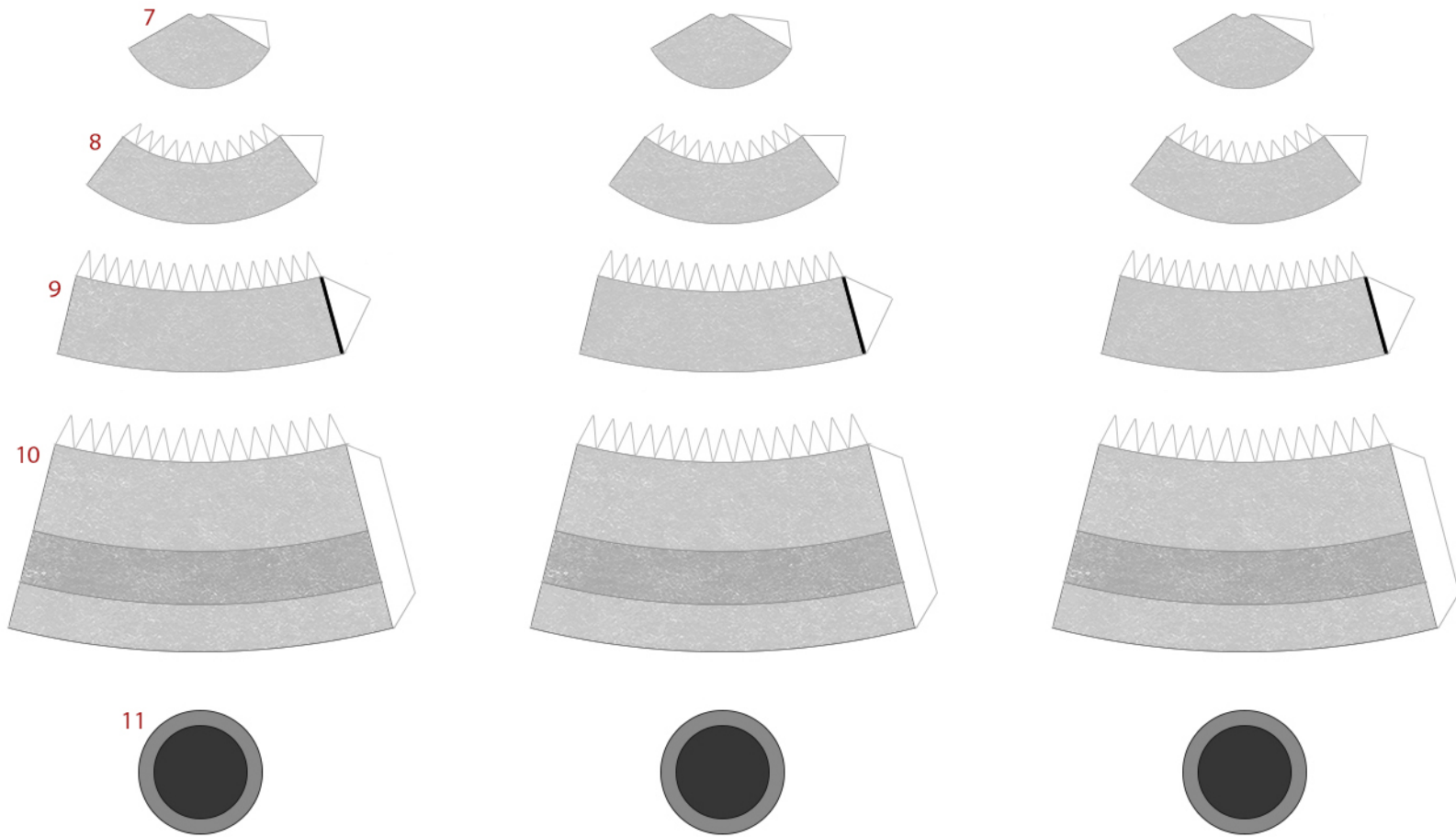


—
Cut plastic broom straw or similar material - colored light grey - the same length as the line above for the antenna

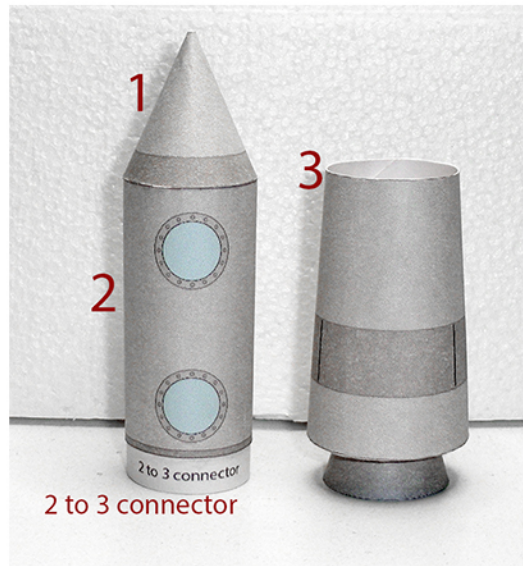
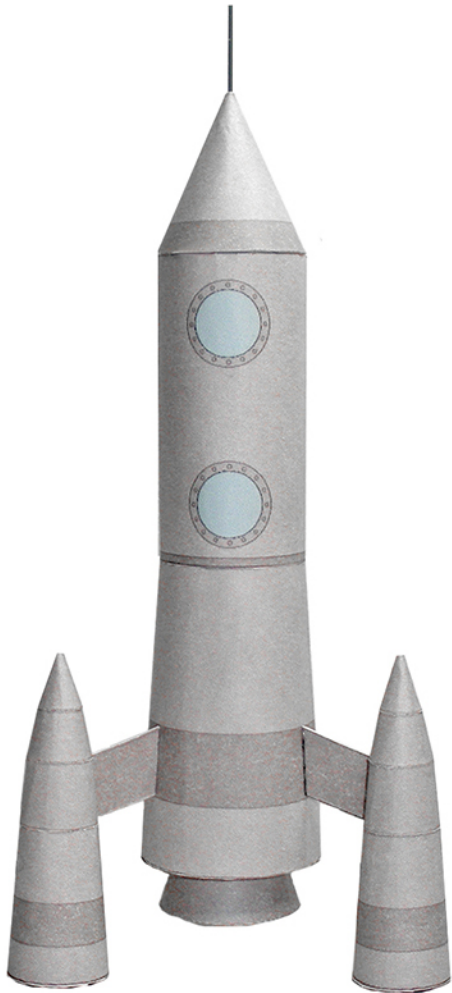


Fold, glue back-to-back at the Blue lines

Retro Rocket Ship 71

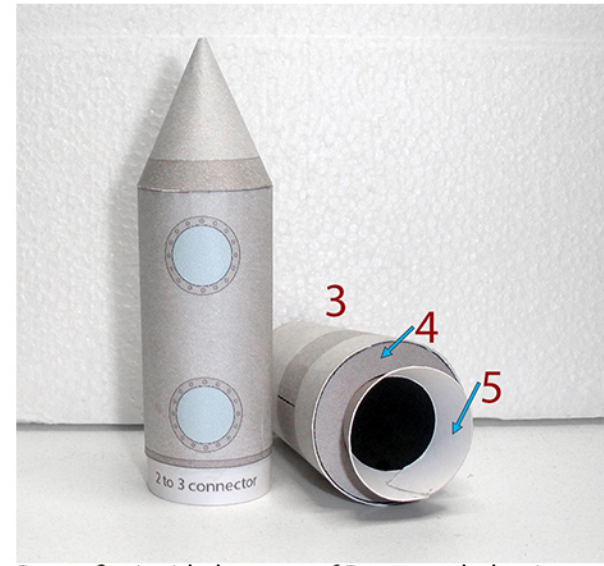


Retro Rocket Ship 71



2 to 3 connector

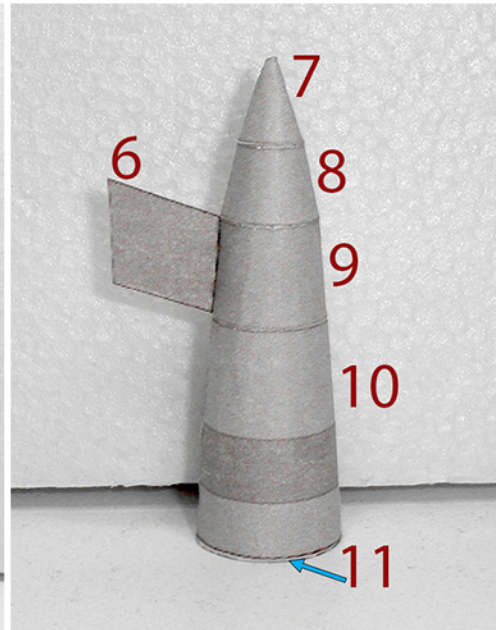
Keep all seems together



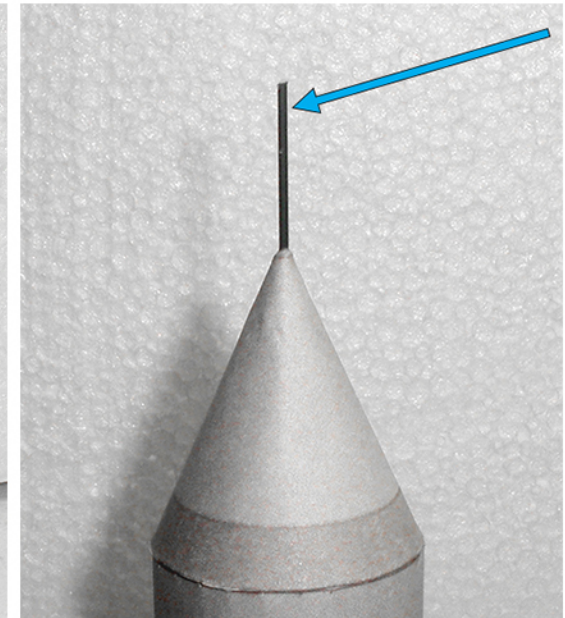
Part 4 fits inside bottom of Part 3 and glue in place.



Glue the two halves together using the connector

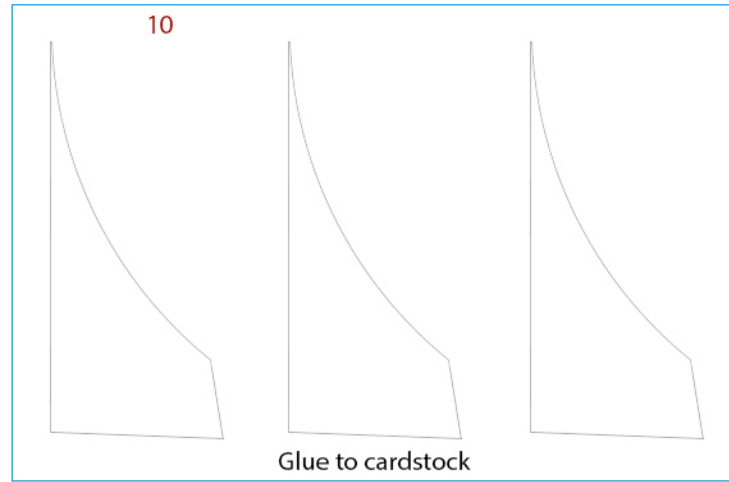
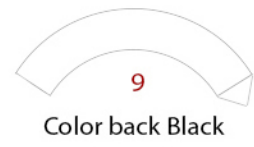
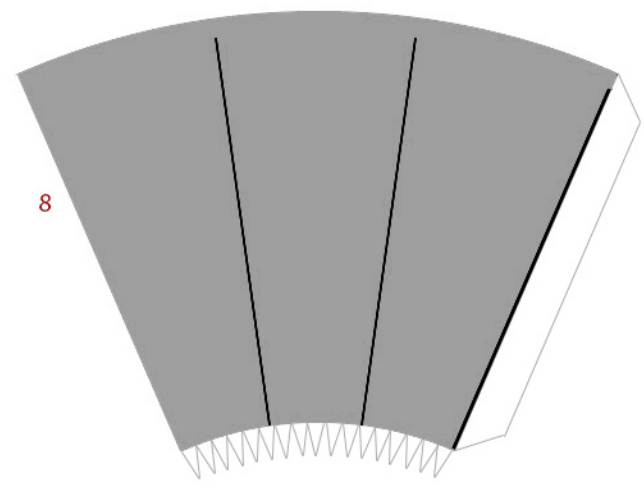
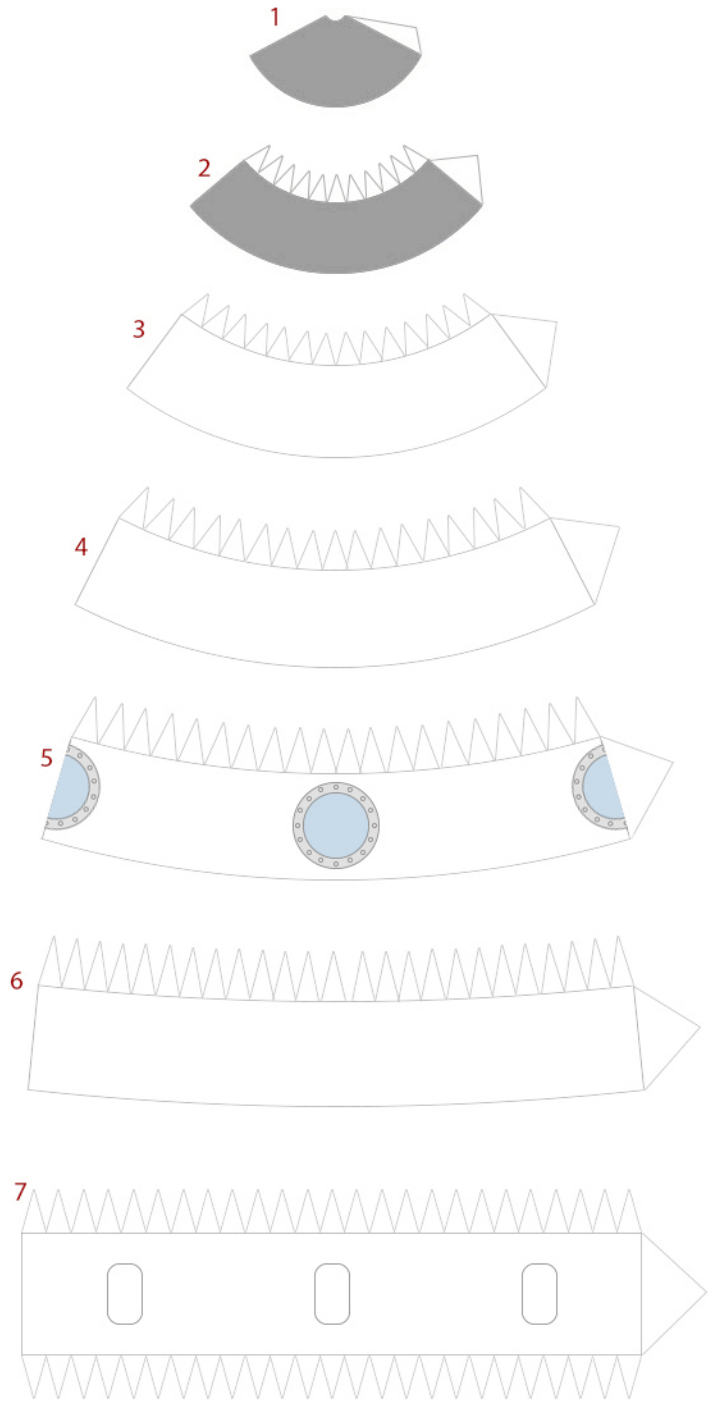


Shorter edge on Part 6 is glued on the Black line on Part 9. Make three (3) of these.
Glue on the three (3) black lines on the body.

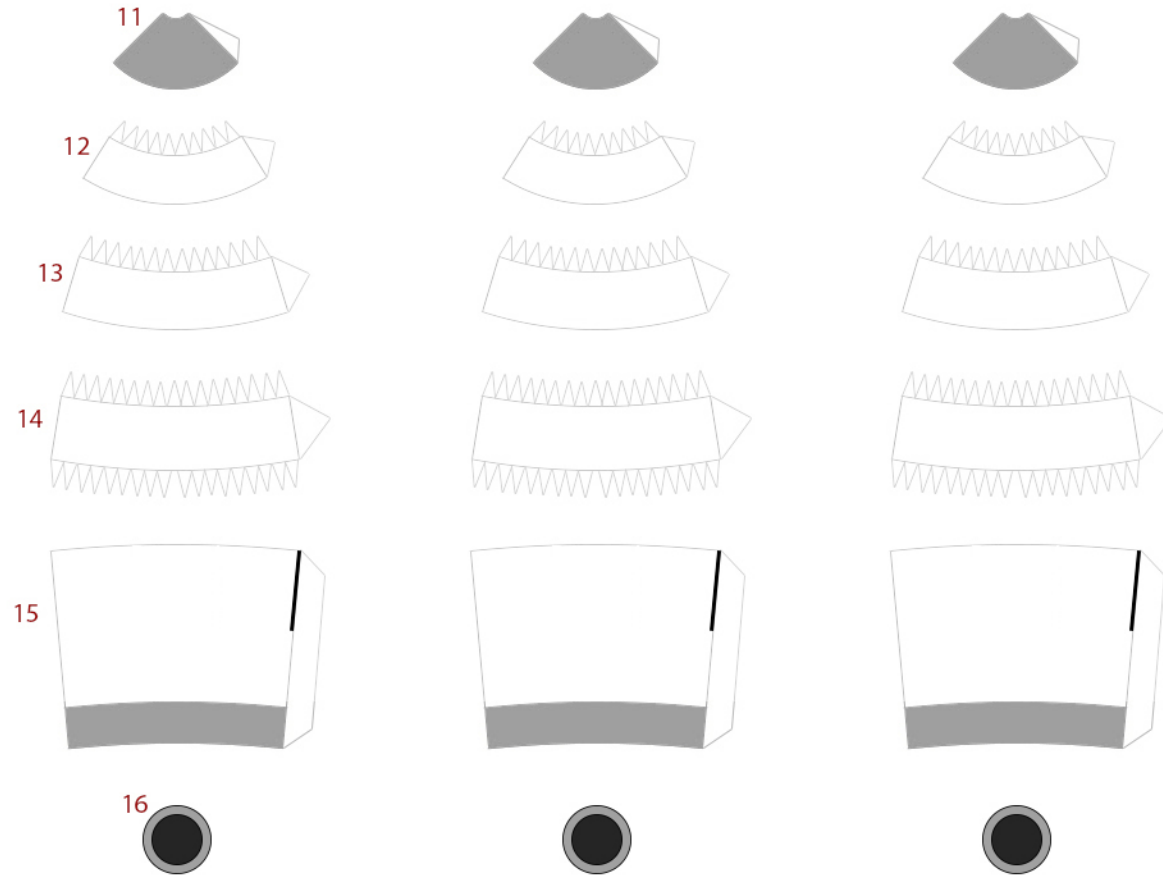


Slide the antenna through the top just a little and glue in place.
Your model is done.

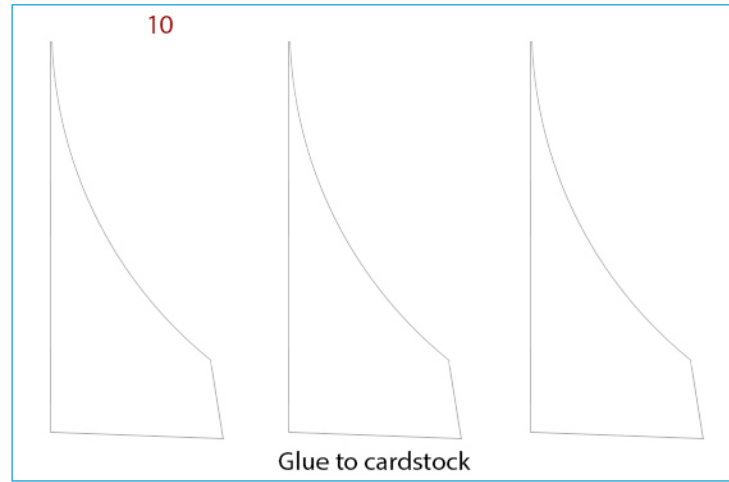
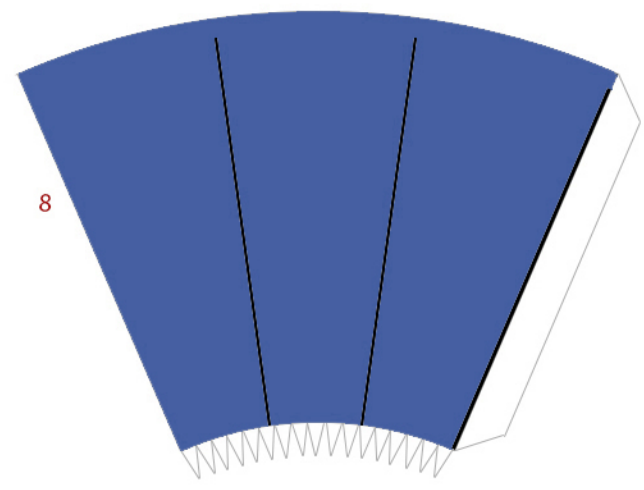
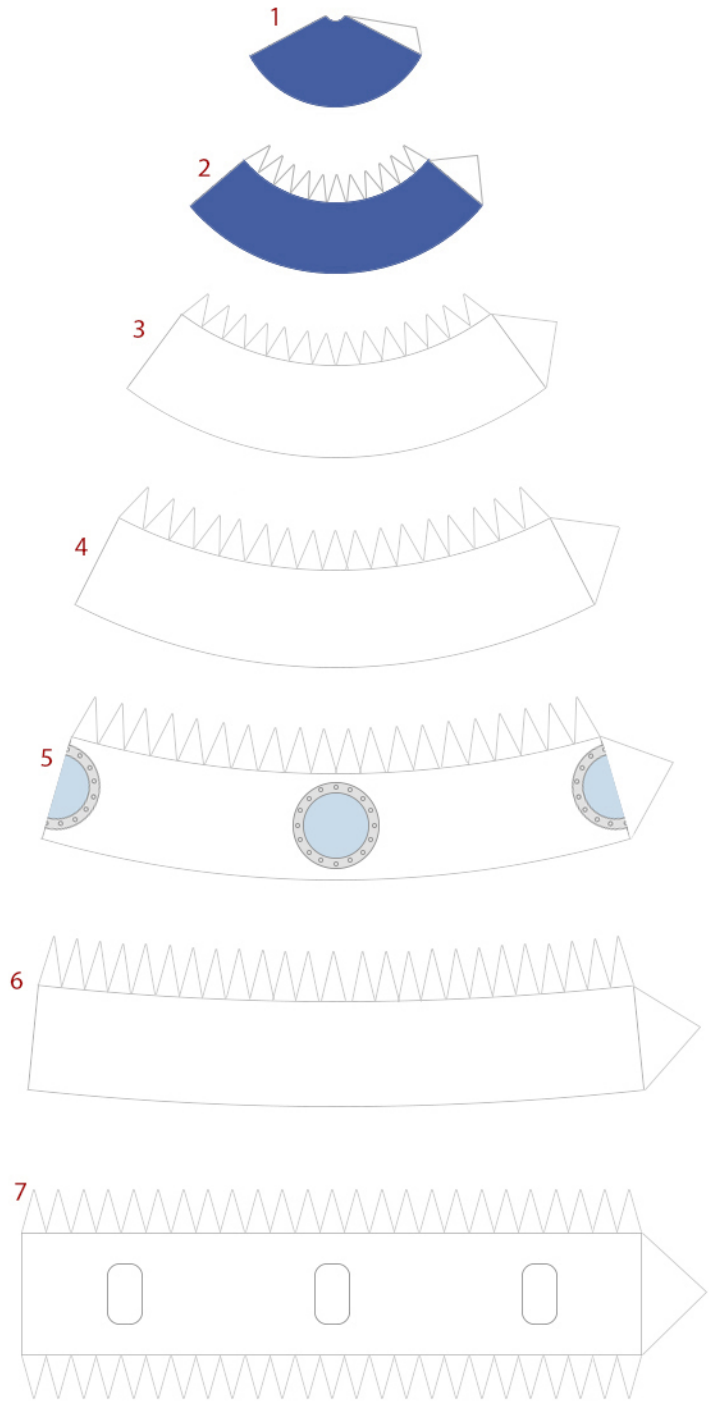
Retro Rocket Ship 72



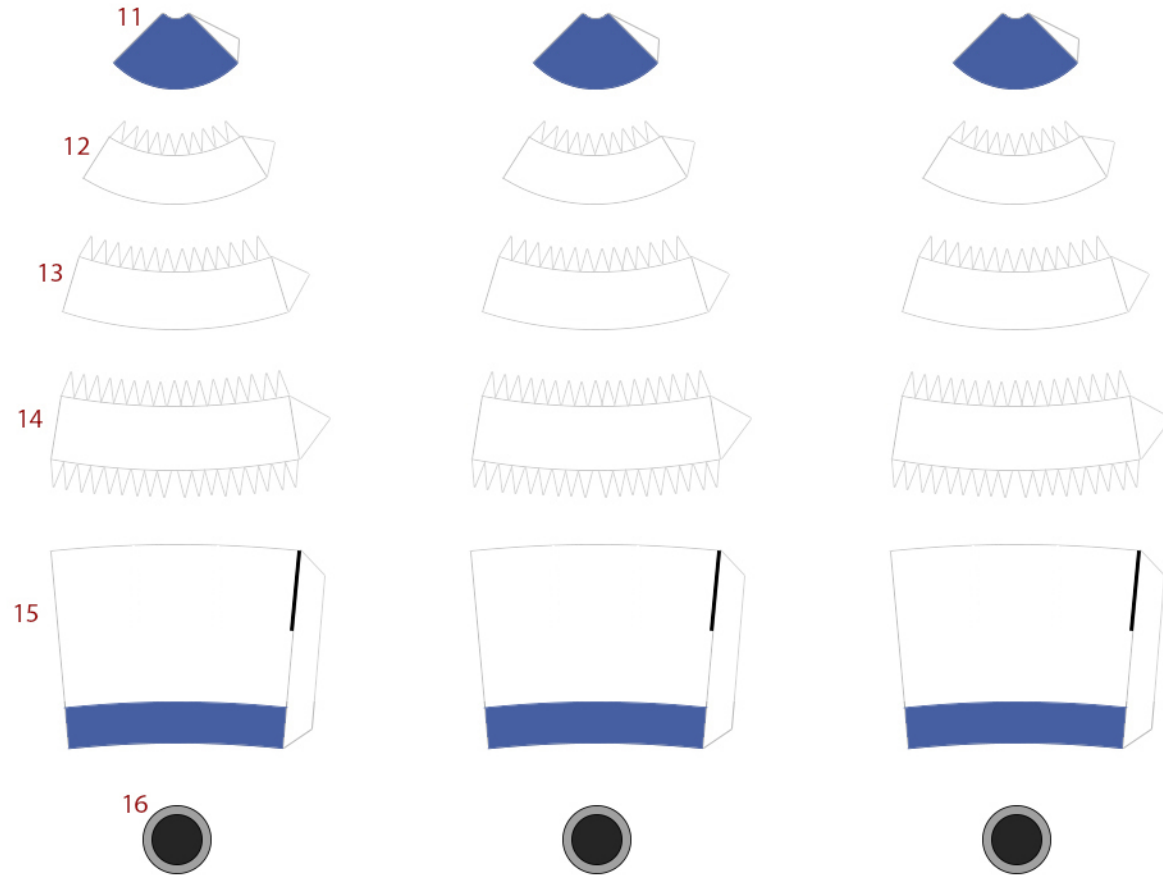
Retro Rocket Ship 72



Retro Rocket Ship 72



Retro Rocket Ship 72



Instructions

Keep all seems together

Glue the fins (Parts 10) to the Black line on 15 on the boosters

Glue the other edge of the fins to the three (3) Black lines on part 8

